



Network

Dome

# QNE-C8013RL

5MP AI Dual Light Flateye Camera



## Key Features

- Max. 5Megapixel (2592x1944) resolution
- 3.0mm fixed lens
- Color: 0.022Lux (F1.2, 1/30sec) /  
BW: 0.0022Lux (F1.2, 1/30sec, 30IRE), 0Lux(IR LED on)
- Max. 30fps@5MP (H.265 / H.264)
- H.265, H.264, MJPEG codec,  
WiseStreamIII (Based on AI engine), Multiple streaming
- Day & Night, WDR (120dB), WiseNR II (Using AI engine)
- Object Classification, Attributes and DetectionShot
- Micro SD / SDHC / SDXC memory slot (Max. 256GB)
- Hallway view, WiseStreamIII (Based on AI engine)
- ONVIF Profile S/G/T/M, SUNAPI(HTTP API)
- LDC, PoE
- IR Viewable length
  - White LED : 30m(98.42ft)
  - IR : 30m(98.42ft)

# QNE-C8013RL

5MP AI Dual Light Flateye Camera



## Specifications

### Video

Imaging Device	1/2.8" CMOS
Resolution	2592x1944, 2560x1440, 1920x1080, 1280x960, 1280x720, 800x600, 800x448, 720x576, 720x480, 640x480, 640x360, 320x240
Max. Framerate	H.265/H.264: Max. 30fps/25fps(60Hz/50Hz) (WDR on/off) MJPEG: Max. 30fps(@5MP Max. 5fps)
Min. Illumination	Color: 0.022Lux (F1.2, 1/30sec) BW: 0.0022Lux (F1.2, 1/30sec, 30IRE), 0Lux(IR LED on)

### Lens

Focal Length (Zoom Ratio)	3.0mm fixed focal
Max. Aperture Ratio	F1.2
Angular Field of View	H: 100° / V: 73° / D: 129°
Min. Object Distance	2.0m(6.56ft)
Focus Control	Fixed
Lens Type	Fixed IRIS
Mount Type	M12

### Pan / Tilt / Rotate

Pan / Tilt / Rotate Range	0°~350° / 0°~75° / 0°~360°
---------------------------	----------------------------

### Operational

Camera Title	Displayed up to 85 characters
Day & Night	Auto(ICR)
Backlight Compensation	BLC, WDR, SSDR
Wide Dynamic Range	120dB
Digital Noise Reduction	WiseNR II (Based on AI engine) SSNR V
Motion Detection	8ea, 8point polygonal zones
Privacy Masking	32ea, 4point quadrangle zones - Color: Gray/Green/Red/Blue/Black/White
Gain Control	Low / Middle / High
White Balance	ATW / AWC / Manual / Indoor / Outdoor
LDC	Support
Electronic Shutter Speed	Minimum / Maximum / Anti flicker (1/5~1/12,000sec)
Digital PTZ	Support
Video Rotation	Flip, Mirror, Hallway view(90°/270°)

## Analytics

Classified object type: Person/Vehicle(Type:car/bus/truck/motorcycle/bicycle)  
 Attributes: Person, Vehicle(Type:car/bus/truck/motorcycle/bicycle)  
 Support DetectionShot  
 Analytics events based on AI engine  
 - Motion detection\*, Object detection, Virtual line\*(Crossing/Direction), Virtual area\*(Loitering/Intrusion/Enter/Exit)  
 Analytics events  
 - Defocus detection, Tampering, Virtual area(Appear/Disappear)

\* Some of the video analytics only works with people and vehicle detection

Business Intelligence	Based on AI engine: People counting, Vehicle counting, Queue management, Heatmap
Alarm Triggers	Analytics, Network disconnect, MQTT subscription
Alarm Events	When alarm trigger occurred - File upload(image) : e-mail/FTP - Notification : e-mail - Recording : SD/SDHC/SDXC or NAS recording at event triggers - Handover(PTZ preset, Send message by HTTP/HTTPS/TCP) - Light alarm - MQTT: publication
Light Type	Warm color(3000K), IR LED(850nm)
Light Viewable Length	White LED : 30m(98.42ft) IR : 30m(98.42ft)

## Network

Ethernet	RJ-45(10/100BASE-T)
Video Compression	H.265/H.264: Main/High, MJPEG
Smart Codec	Manual(5ea area), WiseStreamIII(Based on AI engine)
Video Quality Adjustment	H.264/H.265: Target bitrate level control MJPEG: Quality Level control
Bitrate Control	H.264/H.265: CBR or VBR MJPEG: VBR
Streaming	Unicast(20 users) / Multicast Multiple streaming(Up to 5 profiles)
Protocol	IPv4, IPv6, TCP/IP, UDP/IP, RTP(UDP), RTP(TCP), RTCP, RTSP, NTP, HTTP, HTTPS, SSL/TLS, DHCP, FTP, SMTP, ICMP, IGMP, SNMPv1/v2c/v3(MIB-2), ARP, DNS, DDNS, QoS, UPnP, Bonjour, LLDP, CDP, SRTP(TCP, UDP Unicast), MQTT
Application Programming Interface	ONVIF Profile S/G/T/M SUNAPI(HTTP API) Hanwha Vision Open Platform Oncloud edge recording, compatible with Hanwha Vision's Micro SD cards up to 1TB

## Security

OS / Firmware Protect	Encrypted firmware, Secure boot, Signed firmware
User authentication	Digest Authentication, Prevent brute-force attack
Network authentication	IEEE 802.1X(EAP-TLS, EAP-LEAP, EAP-PEAP, MSCHAPv2)
Secure Communication	HTTPS, WSS(WebSocket Secure)
Access Control	IP-based access control
Data Protect	Encryption credentials, Encrypt compress for live recording file
Audit	Access / System / Event Log management
Device ID	Device certificate(Hanwha Vision Root CA)
Secure Storage	SDcard partition encrypt

## General

Webpage Language	English, Korean, Chinese, French, Italian, Spanish, German, Japanese, Russian, Portuguese, Czech, Polish, Turkish, Dutch, Hungarian, Greek
Edge Storage	Micro SD/SDHC/SDXC 1slot 256GB
Memory	2GB RAM, 1GB Flash

Design and specifications are subject to change without notice. The latest product information / specification can be found at [HanwhaVision.com](http://HanwhaVision.com).

Hanwha Vision is formerly known as Hanwha Techwin.

## Environmental & Electrical

Operating Temperature / Humidity	-40°C~+60°C(-40°F~+140°F) * Start up should be done at above -30°C 0~100% RH(Condensing) Humidity control /w Air sheet
Storage Temperature / Humidity	-50°C~+60°C(-58°F~+140°F) / 0~95% RH
Certification	IP66/IP67, IK10
Input Voltage	PoE(IEEE802.3af, Class3)
Power Consumption	PoE: Max 10.0W, typical 4.5W

## Mechanical

Color / Material	White / Aluminum
RAL Code	RAL9003
Product Dimensions / Weight	ø140.0x99.6mm(ø5.51x3.92"), 790g(1.74 lb)
Compatible Conduit hole / Gangbox	Conduit hole : None Gangbox : Single, Double, 4" Octagon

## Certifications & Standards

EMC	FCC 47 CFR 15 Subpart B Class A ICES-3(A)/NMB-3(A) CE/UKCA - EN 55032 Class A, EN 50130-4, EN 61000-3-2, EN 61000-3-3 VCCI CISPR 32 Class A RCM AS/NZS CISPR 32 Class A
Safety	UL 62368-1, CAN/CSA C22.2 NO. 62368-1 IEC/EN 62471
Environment	IEC/EN 63000 IEC/EN 60529 IP66/IP67, IEC/EN 62262 IK10

## Compatible Models

Hanging Adaptor	SBP-140HMW
Back Box	SBV-140BW
Ceiling Mount (Assy)	SBP-150CMI, SBP-300CMI, SBP-300CMW1, SBP-900CMW, SBP-300CMTW, SBP-300CMTS
Ceiling Mount (Single Unit)	SBP-140CMB, SBP-140CMT, SBP-180CMB, SBP-180CMS, SBP-150CMP, SBP-300CMP, SBP-900CMP, SBP-C15P, SBP-C15H
Wall Mount	SBP-140WMW, SBP-250WMW, SBP-300WMW, SBP-300WMW1, SBP-400WMW
Wall Mount Adaptor	SBP-115PFA, SBP-300BW1
Pole Mount	SBD-140PMB, SBD-140PMW, SBP-300PMW2
Corner Mount	SBD-140KMB, SBP-156KMW, SBP-300KMW1
Parapet Mount	SBP-156LMW1, SBP-300LMW
Tilt Mount	SBV-140TMW
Cabinet	SBP-150NBW, SBP-300NBW
Conduit Adaptor	SBP-060BA

## DORI (EN62676-4 standard)

Detect (25PPM/ 8PPF)	45.9m(150.49ft)
Observe (63PPM/ 19PPF)	18.3m(60.19ft)
Recognize (125PPM/ 38PPF)	9.2m(30.09ft)
Identify (250PPM/ 76PPF)	4.6m(15.05ft)

QNE-C8013RL

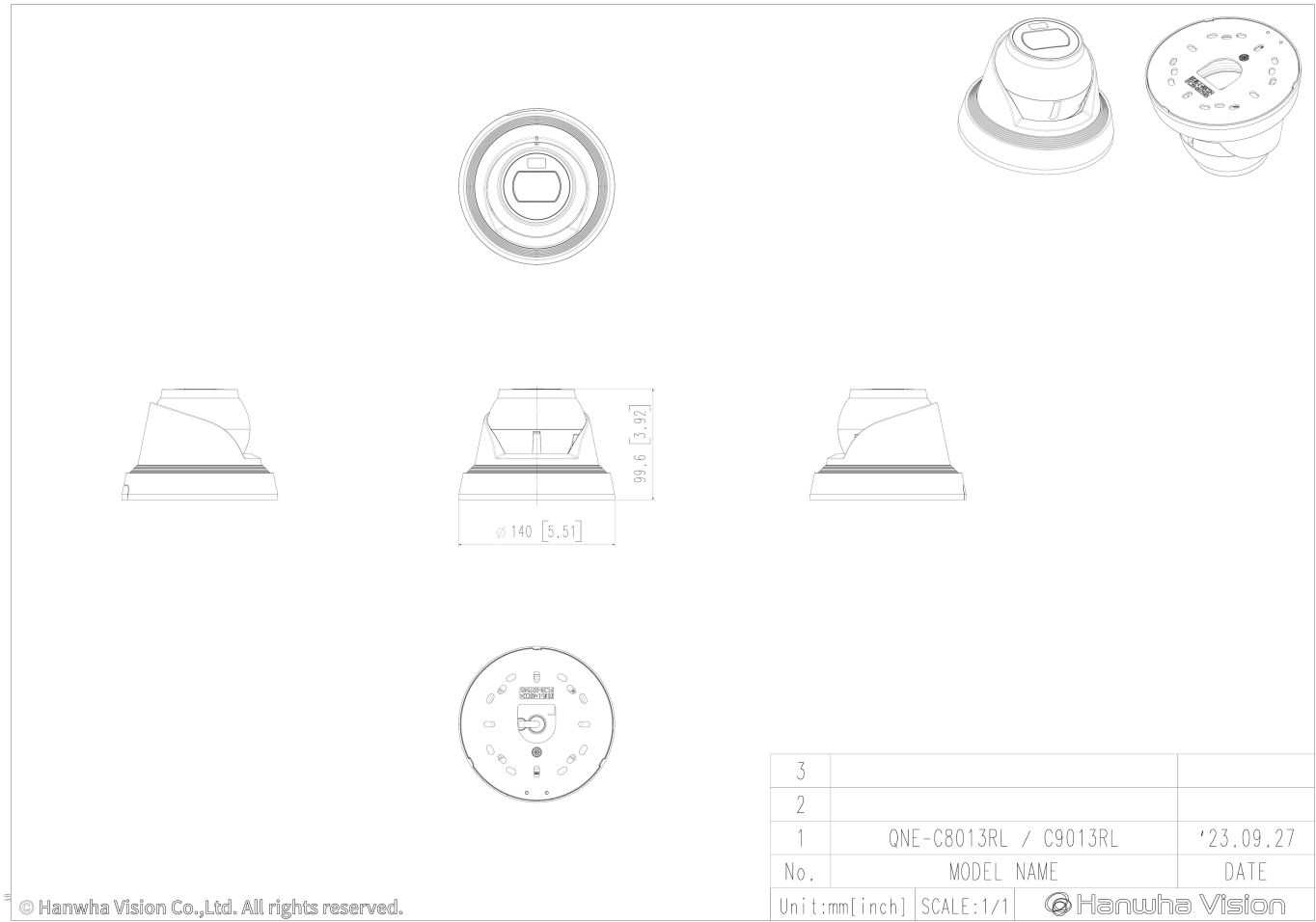
# QNE-C8013RL

5MP AI Dual Light Flateye Camera



CAD

Unit:mm [inch]



© Hanwha Vision Co.,Ltd. All rights reserved.