



Network

Positioning

TNU-6322E

2MP Explosion-proof Camera



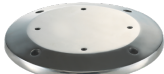
Key Features

- Max. 2MP (1920 x 1080) resolution
- H: 61.8(Wide)~2.19(Tele) / V: 36.2(Wide)~1.24(Tele) Field of View
- Max. 60fps@2MP (H.265, H.264)
- H.265, H.264, MJPEG codec, WiseStream II
- Day & Night (Auto ICR), WDR (120dB)
- Pan/Tilt : 0.5/sec ~80/sec, Endless rotation, Preset (300ea)
- Explosion-proof certificate: IECEX, ATEX, KCs, PESO
- Stainless 316L, Built-in wiper
- IP67, IK10

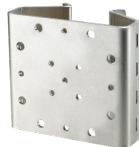
Compatible Accessories (Optional)



SBE-100WM



SBE-100B



SBE-100PM

TNU-6322E

2MP Explosion-proof Camera



Specifications

Video

Imaging Device	1/2.8" CMOS
Resolution	1920x1080, 1280x1024, 1280x960, 1280x720, 1024x768, 800x600, 800x448, 720x576, 720x480, 640x480, 640x360, 320x240
Max. Framerate	H.265/H.264: Max. 60fps/50fps(60Hz/50Hz) MJPEG: Max. 30fps/25fps(60Hz/50Hz)
Min. Illumination	Color: 0.05Lux(F1.6, 1/30sec) BW: 0.005Lux(F1.6, 1/30sec)

Lens

Focal Length (Zoom Ratio)	4.44~142.6mm(32x) zoom
Max. Aperture Ratio	F1.6(Wide)~F4.4(Tele)
Angular Field of View	H: 61.8(Wide)~2.19(Tele) / V: 36.2(Wide)~1.24(Tele)
Min. Object Distance	Wide 1.5m, Tele 2m
Focus Control	Oneshot AF
Lens Type	DC auto iris

Pan / Tilt / Rotate

Pan Range	360 Endless
Pan Speed	0.5/sec ~80/sec
Tilt Range	180(-90 ~90)
Tilt Speed	0.1/sec ~60/sec
Sequence	Preset(300ea), Swing, Group(6ea), Trace, Tour, Auto Run, Schedule
Preset Accuracy	±0.25

Operational

Camera Title	Displayed up to 85 characters
Direction Indicator	Support
Day & Night	Auto(ICR)
Backlight Compensation	BLC, HLC, WDR, SSDR
Wide Dynamic Range	120dB
Digital Noise Reduction	SSNR V
Digital Image Stabilization	Support
Defog	Support
Motion Detection	8ea, 8point polygonal zones
Gain Control	Low / Middle / High
White Balance	ATW / AWC / Manual / Indoor / Outdoor
Electronic Shutter Speed	Minimum / Maximum / Anti flicker (1~1/12,000sec)
Analytics	Defocus detection, Directional detection, Fog detection, Face detection, Motion detection, Appear/Disappear, Enter/Exit, Loitering, Tampering, Virtual line, Audio detection
Alarm I/O	Input 1ea / Output 1ea
Alarm Triggers	Analytics, Network disconnect, Alarm input
Alarm Events	File upload via FTP and e-mail Notification via e-mail NAS recording at event triggers Alarm output PTZ Preset

Audio In	Selectable(mic in/line in) Supply voltage: 2.5VDC(4mA), Input impedance: 2K Ohm
Audio Out	Line out, Max.output level: 1Vrms
Water Removal	Support (with Wiper)

Network

Ethernet	RJ-45 (10/100BASE-T)
Video Compression	H.265/H.264: Main/Baseline/High, MJPEG
Audio Compression	G.711 u-law /G.726 Selectable G.726(ADPCM) 8KHz, G.711 8KHz G.726: 16Kbps, 24Kbps, 32Kbps, 40Kbps AAC-LC: 48Kbps at 16KHz
Smart Codec	Manual(Sea area), WiseStream II
Bitrate Control	H.264/H.265: CBR or VBR MJPEG: VBR
Streaming	Unicast(20 users) / Multicast Multiple streaming(Up to 10 profiles)
Protocol	IPv4, IPv6, TCP/IP, UDP/IP, RTP(UDP), RTP(TCP), RTCP,RTSP, NTP, HTTP, HTTPS, SSL/TLS, DHCP, FTP, SMTP, ICMP, IGMP, SNMPv1/v2c/v3(MIB-2), ARP, DNS, DDNS, QoS, PIM-SM, UPnP, Bonjour
Security	HTTPS(SSL) login authentication Digest login authentication IP address filtering User access log 802.1X authentication(EAP-TLS, EAP-LEAP)
Application Programming Interface	ONVIF Profile S/G/T SUNAPI(HTTP API) Wisenet open platform

General

Webpage Language	English, Korean, Chinese, French, Italian, Spanish, German, Japanese, Russian, Swedish, Portuguese, Czech, Polish, Turkish, Dutch, Hungarian, Greek
Memory	1024MB RAM, 256MB Flash

Environmental & Electrical

Operating Temperature / Humidity	-40°C~+60°C(-40°F ~ +140°F) / Less than 95% RH
Storage Temperature / Humidity	-30°C~+60°C(-22°F ~ +140°F) / Less than 95% RH
Certification	IECEX, ATEX, KCs, KC, CE IP67, IK10, PESO certified
Input Voltage	24VAC
Power Consumption	24VAC: Max. 99W

Mechanical

Color / Material	Metalic Silver / Stainless 316L
Product Dimensions / Weight	355(W)x427(H)x235(D)mm(13.97x16.81x9.25"), 25kg(55.12lb)

TNU-6322E

2MP Explosion-proof Camera



CAD

Unit: mm [inch]

TNU-6322E

