

EMC TEST REPORT

Test Report No. : KES-EM-22T0620-R1
Date of Issue : Feb. 24, 2023
Product name : NETWORK CAMERA
Model/Type No. : XNF-9013RV
Variant Model : -
Applicant : Hanwha Vision Co., Ltd
Applicant Address : 6, Pangyo-ro 319Beon-gil, Bundang-gu, Seongnam-si,
Gyeonggi-do, Republic of Korea
Manufacturer : 1. HANWHA VISION VIETNAM COMPANY LIMITED
2. D-TECH CO.,LTD.
Manufacturer Address : 1. Lot O-2, Que Vo Industrial Zone extended area,
Nam Son commune, Bac Ninh city, Bac Ninh province, Vietnam
2. 173-25, Saneop-ro, Gwonseon-gu, Suwon-si, Gyeonggi- do,
Korea (Suwon Industrial Complex)
Equipment authorization : **Supplier's Declaration of Conformity**
Date of Receipt : Jun. 14, 2022
Test date : Jul. 04, 2022
Test Results : ☒ **In Compliance** ☐ **Not in Compliance**

Tested by



Eun Gu, Jeon
EMC Test Engineer

Reviewed by



Dong-Hun, Jang
EMC Technical Manager

This test report is not related to KS Q ISO/IEC 17025 and KOLAS.



REPORT REVISION HISTORY

Date	Test Report No.	Revision History
Jul. 26, 2022	KES-EM-22T0620	Issued
Feb. 24, 2023	KES-EM-22T0620-R1	Change the Applicant and manufacturer at the request of the customer

This report shall not be reproduced except in full, without the written approval of KES Co., Ltd. This document may be altered or revised by KES Co., Ltd. personnel only, and shall be noted in the revision section of the document. Any alteration of this document not carried out by KES Co., Ltd. will constitute fraud and shall nullify the document.



TABLE OF CONTENTS

1.0	General Product Description.....	4
1.1	Test Voltage & Frequency	8
1.2	Variant Model Differences	8
1.3	Device Modifications	8
1.4	Equipment Under Test.....	8
1.5	Support Equipments	8
1.6	External I/O Cabling	9
1.7	EUT Operating Mode(s)	10
1.8	Configuration.....	11
1.9	Remarks when standards applied	12
1.10	Calibration Details of Equipment Used for Measurement	12
1.11	Test Facility	12
1.12	Laboratory Accreditations and Listings	12
2.0	Test Regulations.....	13
2.1	Conducted Emissions at Mains Power Ports	14
2.2	Radiated Electric Field Emissions(Below 1 GHz)	16
2.3	Radiated Electric Field Emissions(Above 1 GHz)	18
APPENDIX A – TEST DATA.....		20
Conducted Emissions at Mains Power Ports.....		20
Radiated Electric Field Emissions(Below 1 GHz)		26
Radiated Electric Field Emissions(Above 1 GHz)		30
Test Setup Photos and Configuration		32
Conducted Emissions at Mains Power Ports.....		32
Radiated Electric Field Emissions(Below 1 GHz)		34
Radiated Electric Field Emissions(Above 1 GHz)		36
EUT External Photographs		38
EUT Internal Photographs		39

1.0 General Product Description

Main Specifications of EUT are:

	XNF-9013RV
Video	
Imaging Device	1/2.3" 12MP CMOS
Resolution	Original view(1:1): 3008x3008~480x480, Double panorama(2:1): 3584x1792~640x320, Single panorama(4:1): 3584x896~640x160, Quad view: 3584x2688~640x480, Q1/Q2/Q3/Q4(4:3): 1792x1344~640x480
Max. Framerate	H.265/H.264: Original view-Max.30fps/25fps@3008x3008(60Hz/50Hz), Double panorama- Max.30fps/25fps@3584x1792(60Hz/50Hz) Single panorama-Max.30fps/25fps@3584x896(60Hz/50Hz) MJPEG: Max.30fps/25fps@1080x1080(60Hz/50Hz)
NETD	None
Pixel Size	None
Min. Illumination	Color: 0.39 Lux (F2.2, 1/30sec), BW : 0Lux(IR LED on)
Video Out	CVBS : 1.0 Vp-p / 75Ω composite, 720x480(N), 720x576(P), for Installation USB: Micro USB Type B, 1280x720 for installation
Video Transmission Distance	None
Lens	
Focal Length (Zoom Ratio)	1.08mm fixed focal
Max. Aperture Ratio	F2.2
Angular Field of View	H: 187° / V: 187° / D: 187°
Min. Object Distance	0.5m(1.64ft)
Focus Control	Simple focus
Lens Type	None
Mount Type	None
Optional Lens	None
Pan / Tilt / Rotate	

This report shall not be reproduced except in full, without the written approval of KES Co., Ltd.
The results shown in this test report refer only to the sample(s) tested unless otherwise stated.
The authenticity of the test report, contact kes@kes.co.kr

**KES Co., Ltd.**

3701, 40, Simin-daero 365beon-gil,
Dongan-gu, Anyang-si, Gyeonggi-do, 14057, Korea
Tel: +82-31-425-6200 / Fax: +82-31-424-0450
www.kes.co.kr

Report No.:

KES-EM-22T0620-R1

Page (5) of (45)

Pan / Tilt / Rotate Range	Lens Rotation
Pan Range	None
Pan Speed	None
Tilt Range	None
Tilt Speed	None
Rotate Range	None
Sequence	None
Preset Accuracy	None
Operational	
Camera Title	Displayed up to 85 characters
Direction Indicator	None
Day & Night	Auto(ICR)
Backlight Compensation	BLC, HLC, WDR, SSDR
Wide Dynamic Range	extremeWDR (120dB)
Digital Image Stabilization	None
Defog	None
Motion Detection	8ea, 8point polygonal zones
Privacy Masking	32ea, polygonal zones - Color: Grey/Green/Red/Blue/Black/White - Mosaic
Gain Control	Off / Max Gain / Manual
White Balance	ATW / Narrow ATW / AWC / Manual / Indoor / Outdoor
LDC	None
Digital PTZ	Support(Preset, Group)
Video Rotation	Flip, Mirror
Serial Interface	None
Alarm I/O	2 configurable I/O ports
Alarm Triggers	Analytics, Network disconnect, Alarm input
Alarm Events	File upload via FTP and e-mail Notification via e-mail SD/SDHC/SDXC or NAS recording at event triggers Alarm output PTZ Preset

This report shall not be reproduced except in full, without the written approval of KES Co., Ltd.
The results shown in this test report refer only to the sample(s) tested unless otherwise stated.
The authenticity of the test report, contact kes@kes.co.kr

	Handover Audio playback
Audio In	Selectable(mic in/line in/built-in mic) Supply voltage: 2.5VDC(4mA), Input impedance: 2K Ohm
Audio Out	Line out, Max. output level: 1Vrms
IR Illuminator (Optional)	None
Water Removal	None
Auto Tracking	None
Coaxial Protocol	None
Color Palettes	None
Radiometry	
Temperature detect range	None
Temperature accuracy	None
Temperature detection	None
Additional	None
Network	
Ethernet	Metal shielded RJ-45(10/100BASE-T)
Video Compression	H.265/H.264: Main/Baseline/High, MJPEG
Audio Compression	G.711 u-law /G.726 Selectable G.726(ADPCM) 8KHz, G.711 8KHz G.726: 16Kbps, 24Kbps, 32Kbps, 40Kbps AAC-LC: 48Kbps at 16KHz
Video Quality Adjustment	H.264/H.265: Target bitrate level control MJPEG: Quality level control
Bitrate Control	H.264/H.265: CBR or VBR MJPEG: VBR
Protocol	IPv4, IPv6, TCP/IP, UDP/IP, RTP(UDP), RTP(TCP), RTCP,RTSP, NTP, HTTP, HTTPS, SSL/TLS, DHCP, FTP, SMTP, ICMP, IGMP, SNMPv1/v2c/v3(MIB-2), ARP, DNS, DDNS, QoS, UPnP, Bonjour, LLDP, SRTP (TCP, UDP Unicast)
Security	HTTPS(SSL) Login Authentication Digest Login Authentication IP Address Filtering User access log

This report shall not be reproduced except in full, without the written approval of KES Co., Ltd.
The results shown in this test report refer only to the sample(s) tested unless otherwise stated.
The authenticity of the test report, contact kes@kes.co.kr

	802.1X Authentication(EAP-TLS, EAP-LEAP) Device Certificate(Hanwha Techwin Root CA)
General	
Webpage Language	English, Korean, Chinese, French, Italian, Spanish, German, Japanese, Russian, Swedish,, Portuguese, Czech, Polish, Turkish, Dutch, Hungarian, Greek
Web Viewer	None
Edge Storage	Micro SD/SDHC/SDXC 2slot 1TB(512GBx2)
Memory	4096MB RAM, 512MB Flash
Environmental & Electrical	
Storage Temperature / Humidity	-50°C ~ +60°C(-58°F ~ +140°F) / Less than 95% RH
Certification	IP66, IK10, NEMA4X
Input Voltage	PoE(IEEE802.3af, Class3), PoE+ , 12VDC
Mechanical	
Color / Material	White / Aluminum, Hard-coated dome bubble
RAL Code	RAL9003
Product dimensions / weight	Ø160x72mm(6.23x2.84")
Conduit hole	None
Hanging mount(Dome)	SBP-167HMW
Skin cover(Dome)	SBC-160BF
Weather cap(Dome)	None
Power module	None
Backbox	None
DORI (EN62676-4 standard)	
Detect (25PPM/ 8PPF)	34.9m(114.49ft)
Observe (63PPM/ 19PPF)	13.9m(45.60ft)
Recognize (125PPM/ 38PPF)	7.0m(22.96ft)
Identify (250PPM/ 76PPF)	3.5m(11.48ft)

1.1 Test Voltage & Frequency

Unless indicated otherwise on the individual data sheet or test results, the test voltage and frequency was as indicated below.

☒ AC 120 V, 60 Hz (DC Adapter Input Power)

1.2 Variant Model Differences

Not applicable

1.3 Device Modifications

Not applicable

1.4 Equipment Under Test

Description	Model Number	Serial Number	Manufacturer	Remarks
NETWORK CAMERA	XNF-9013RV	-	HANWHA VISION VIETNAM COMPANY LIMITED	EUT

1.5 Support Equipments

Description	Model Number	Serial Number	Manufacturer	Remarks
Adapter	2ACB022F	-	ChAnnel Well Technology (Guangzhou) Co.,Ltd.	-
PoE Adapter	NEXT-POE2403JM	-	EZ-NET	-
Notebook PC	LG15N54	506NZGK000615	LG.	-
Notebook PC Adapter	PA-1650-43(65W)	OF58U63849302 Y609	LG.	-
Micro SD Card #1	-	-	SanDisk	-
Micro SD Card #2	-	-	SanDisk	-
Cell Phone	Galaxy S8+	-	SAMSUNG	-
Button Alarm	-	-	-	-
LED Alarm	PRO-SL	-	SENSOR PRO	-
Speaker	BR1000A Cuve Black 2	-	DONGGUAN EDIFIER TECHNOLOGY Co., Ltd	-
Mic	MP1000	-	-	-

This report shall not be reproduced except in full, without the written approval of KES Co., Ltd.
The results shown in this test report refer only to the sample(s) tested unless otherwise stated.
The authenticity of the test report, contact kes@kes.co.kr

1.6 External I/O Cabling

■ DC Mode

Start		END		Cable Spec.	
Description	I/O Port	Description	I/O Port	Length	Shield
NETWORK CAMERA (EUT)	2 Pin	Adapter	2 Pin	1.5	U
	RJ-45	Notebook PC	RJ-45	3.5	U
	Micro SD	Micro SD Card #1	Micro SD	-	-
	Micro SD	Micro SD Card #2	Micro SD	-	-
	2 Pin (ALARM #1)	Button Alarm	2 Pin	3.2	U
	2 Pin (ALARM #2)	LED Alarm	2 Pin	3.2	U
	3.5 mm	Speaker	3.5 mm	1.2	U
	3.5 mm	Mic	XLR	1.5	U
Notebook PC	DC Jack	Notebook PC Adapter	DC Jack	1.5	S
	3.5 mm	Cell Phone	3.5 mm	1.2	U

* Unshielded=U, Shielded=S

■ PoE Mode

Start		END		Cable Spec.	
Description	I/O Port	Description	I/O Port	Length	Shield
NETWORK CAMERA (EUT)	RJ-45	PoE Adapter	RJ-45	3.5	U
	Micro SD	Micro SD Card #1	Micro SD	-	-
	Micro SD	Micro SD Card #2	Micro SD	-	-
	2 Pin (ALARM #1)	Button Alarm	2 Pin	3.2	U
	2 Pin (ALARM #2)	LED Alarm	2 Pin	3.2	U
	3.5 mm	Speaker	3.5 mm	1.2	U
	3.5 mm	Mic	XLR	1.5	U
PoE Adapter	RJ-45	Notebook PC	RJ-45	1.0	U
Notebook PC	DC Jack	Notebook PC Adapter	DC Jack	1.5	S
	3.5 mm	Cell Phone	3.5 mm	1.2	U

* Unshielded=U, Shielded=S

**KES Co., Ltd.**

3701, 40, Simin-daero 365beon-gil,
Dongan-gu, Anyang-si, Gyeonggi-do, 14057, Korea
Tel: +82-31-425-6200 / Fax: +82-31-424-0450
www.kes.co.kr

Report No.:

KES-EM-22T0620-R1

Page (10) of (45)

1.7 EUT Operating Mode(s)

Test Mode	operating
DC, PoE Mode	Check the Normal Operation status. after testing, check if the recording is normally done on the Micro SD Card #1, Micro SD Card #2

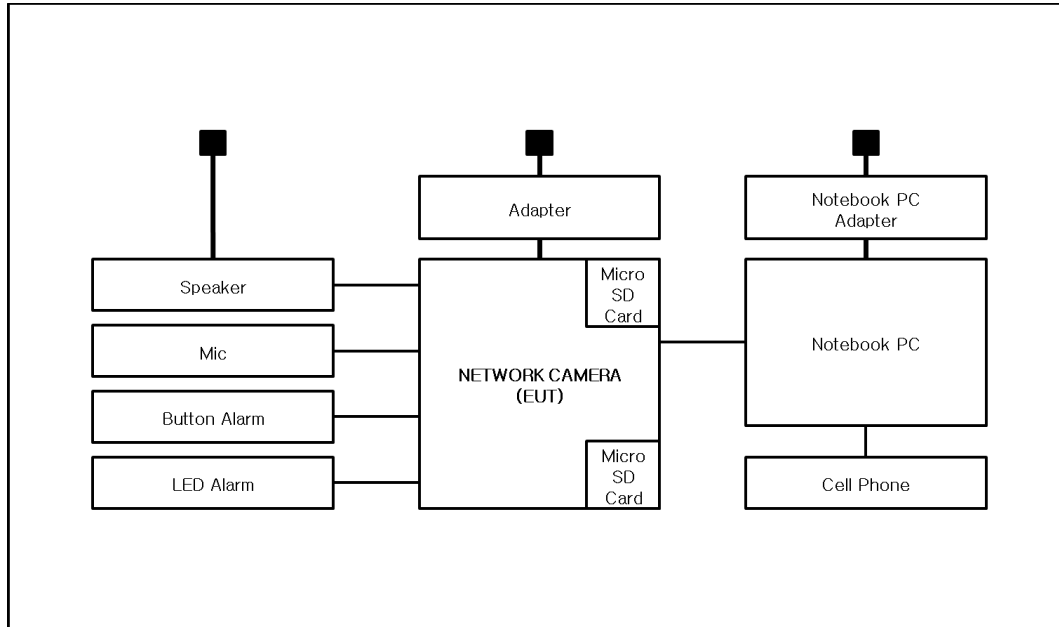
EUT Test operating S/W		
Name	Version	Manufacture Company
Web Viewer	-	Hanwha Vision Co., Ltd

This report shall not be reproduced except in full, without the written approval of KES Co., Ltd.
The results shown in this test report refer only to the sample(s) tested unless otherwise stated.
The authenticity of the test report, contact kes@kes.co.kr

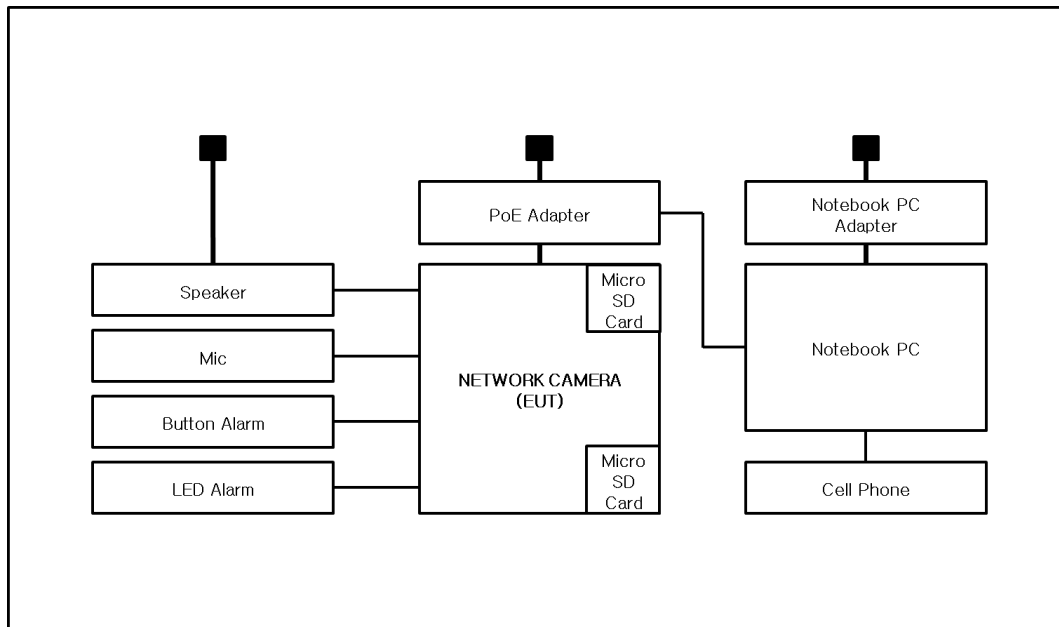
1.8 Configuration

■ AC Main
 □ DC Main

■ DC Mode



■ PoE Mode



1.9 Remarks when standards applied

The usb and video ports were excluded from the test as administrator ports.







1.10 Calibration Details of Equipment Used for Measurement

Test equipment and test accessories are calibrated on regular basis. The maximum time between calibrations is one year or what is recommended by the manufacturer, whichever is less.

1.11 Test Facility

The measurement facility is located at 473-21, Gayeo-ro, Yeosu-si, Gyeonggi-do, 12658, Korea, Republic of. The sites are constructed in conformance with the requirements of ANSI C63.4a-2017 and CISPR 16-1-4:2019

1.12 Laboratory Accreditations and Listings

Country	Agency	Scope of Accreditation	Logo
KOREA	RRA	EMI (3 m & 10 m Semi-Anechoic Chamber and conducted test site) EMS (ESD, RS, EFT/Burst, Surge, CS, Magnetic, Dips and interruptions)	 KR0100
International	KOLAS	EMI (3 m & 10 m Semi-Anechoic Chamber and conducted test site) EMS (ESD, RS, EFT/Burst, Surge, CS, Magnetic, Dips and interruptions)	 KT489
USA	FCC	3 m & 10 m Semi-Anechoic Chamber Conducted test site to perform FCC Part 15/18 measurements.	 KR0100
Canada	ISED	3 m & 10 m Semi-Anechoic Chamber and Conducted test site	 23298
JAPAN	VCCI	EMI (3 m & 10 m Semi-Anechoic Chamber and conducted test site)	 C-20136, T-20137, R-20181, G-20176
Europe	TÜV SÜD	EMI (3 m & 10 m Semi-Anechoic Chamber and conducted test site) EMS (ESD, RS, EFT/Burst, Surge, CS, Magnetic, Dips and interruptions)	 CARAT 001633 0004

2.0 Test Regulations

The emissions tests were performed according to following regulations:

☒ **47 CFR Part 15, Subpart B**

☐ CISPR 22:2009 +A1:2010

☐ Class A

☐ Class B

☒ ANSI C63.4a-2017

☒ Class A

☐ Class B

☒ **IC Regulation ICES-003 Issue 7**

☐ CAN/CSA-CISPR 32:17

☐ Class A

☐ Class B

☒ ANSI C63.4a-2017

☒ Class A

☐ Class B

2.1 Conducted Emissions at Mains Power Ports

Test Date

Jul. 04, 2022

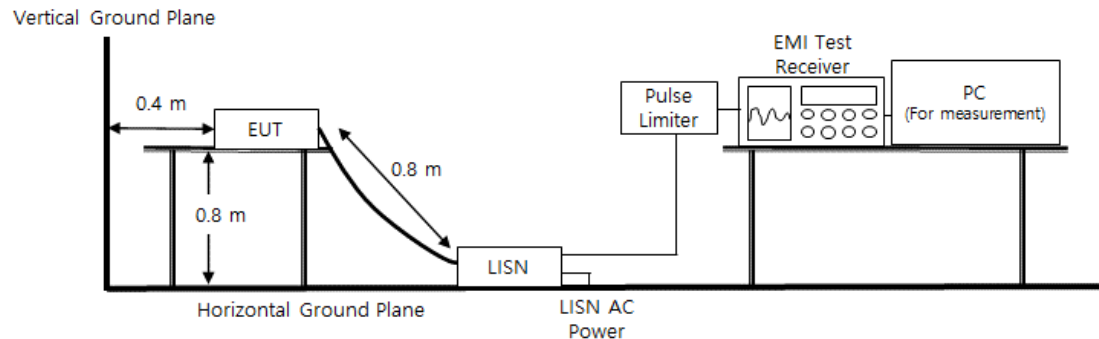
Test Location

Electro wave Shieldroom #6

Test Equipment

Used	Description	Model Number	Manufacturer	Serial Number	Cal. Due
<input checked="" type="checkbox"/>	EMI Test S/W	EMC32	R & S	9.12.00	-
<input checked="" type="checkbox"/>	EMI TEST RECEIVER	ESR3	R & S	101783	12, 28, 2022
<input checked="" type="checkbox"/>	LISN	ENV216	R & S	101787	12, 27, 2022
<input checked="" type="checkbox"/>	LISN	ESH2-Z5	R & S	100450	12, 27, 2022
<input checked="" type="checkbox"/>	PULSE LIMITER	ESH3-Z2	R & S	101915	12, 27, 2022

Diagram of test setup





KES Co., Ltd.

3701, 40, Simin-daero 365beon-gil,
Dongan-gu, Anyang-si, Gyeonggi-do, 14057, Korea
Tel: +82-31-425-6200 / Fax: +82-31-424-0450
www.kes.co.kr

Report No.:

KES-EM-22T0620-R1

Page (15) of (45)

Test Conditions

Temperature: $(24,7 \pm 0,1) ^\circ\text{C}$
Relative Humidity: $(43,8 \pm 0,1) \% \text{ R.H.}$

Frequency Range of Measurement

150 kHz to 30 MHz

Instrument Settings

IF Band Width: 9 kHz

Test Results

The requirements are:

- ☒ PASS
- ☐ NOT PASS
- ☐ NOT APPLICABLE

Remarks

See Appendix A for test data.

This report shall not be reproduced except in full, without the written approval of KES Co., Ltd.
The results shown in this test report refer only to the sample(s) tested unless otherwise stated.
The authenticity of the test report, contact kes@kes.co.kr

2.2 Radiated Electric Field Emissions(Below 1 GHz)

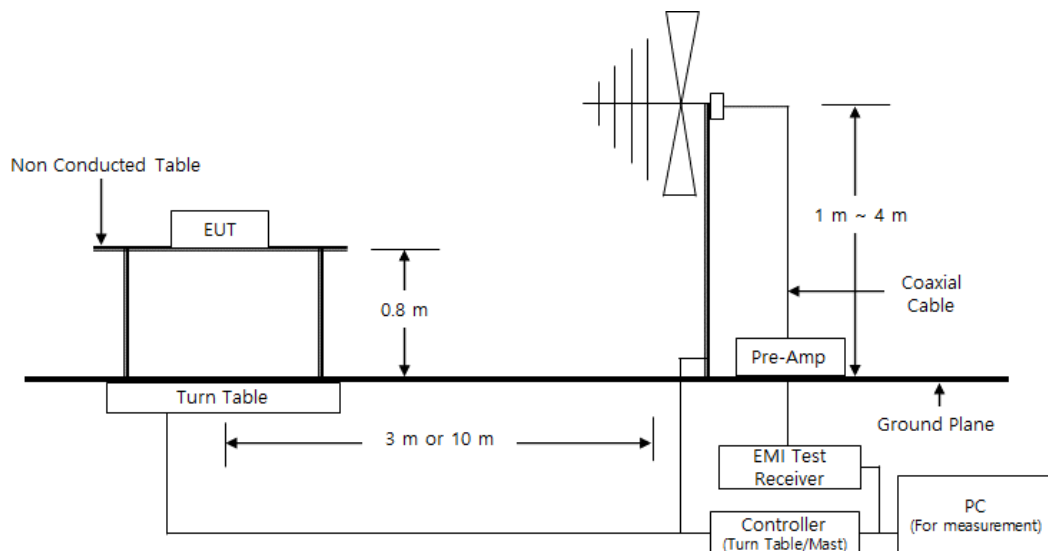
Test Date
Jul. 04, 2022

Test Location
☐ OPEN AREA TEST SITE #2 ☒ SEMI ANECHOIC CHAMBER #4(10m)

Test Equipment

Used	Description	Model Number	Manufacturer	Serial Number	Cal. Due
<input checked="" type="checkbox"/>	EMI Test S/W	EP5/RE	TOYO Corporation	6.0.0	-
<input checked="" type="checkbox"/>	EMI TEST RECEIVER	ESU26	R & S	100551	03, 31, 2023
<input checked="" type="checkbox"/>	AMPLIFIER	SCU 01	R & S	100603	11, 24, 2022
<input checked="" type="checkbox"/>	TRILOG-BROADBAND ANTENNA	VULB9163	Schwarzbeck	715	12, 08, 2022
<input checked="" type="checkbox"/>	ATTENUATOR	8491A	HP	32173	03, 08, 2023

Diagram of test setup





KES Co., Ltd.

3701, 40, Simin-daero 365beon-gil,
Dongan-gu, Anyang-si, Gyeonggi-do, 14057, Korea
Tel: +82-31-425-6200 / Fax: +82-31-424-0450
www.kes.co.kr

Report No.:

KES-EM-22T0620-R1

Page (17) of (45)

Test Conditions

Temperature: (24,8 ± 0,1) °C

Relative Humidity: (44,0 ± 0,1) % R.H.

Frequency Range of Measurement

30 MHz to 1 GHz

Instrument Settings

IF Band Width: 120 kHz

Test Results

The requirements are:

- ☒ PASS
- ☐ NOT PASS
- ☐ NOT APPLICABLE

Remarks

See Appendix A for test data.

This report shall not be reproduced except in full, without the written approval of KES Co., Ltd.
The results shown in this test report refer only to the sample(s) tested unless otherwise stated.
The authenticity of the test report, contact kes@kes.co.kr

2.3 Radiated Electric Field Emissions(Above 1 GHz)

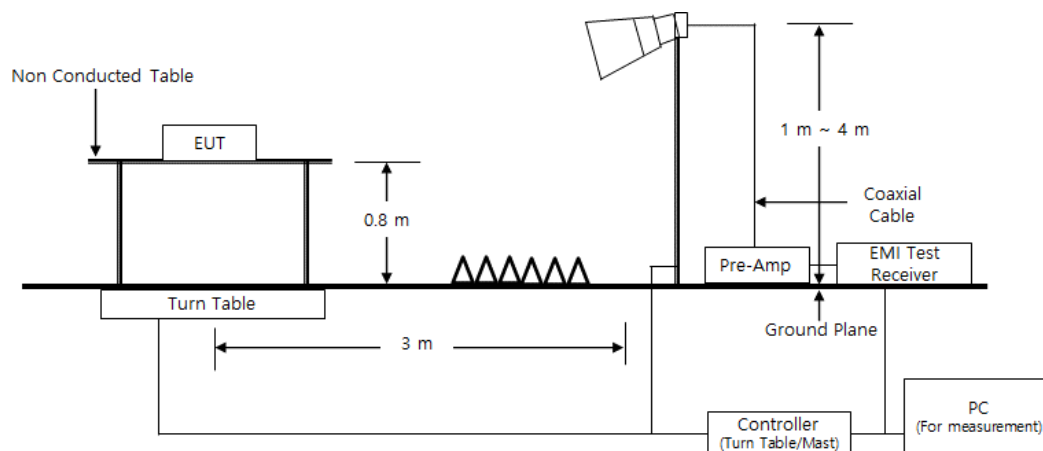
Test Date
Jul. 04, 2022

Test Location
SEMI ANECHOIC CHAMBER #5

Test Equipment

Used	Description	Model Number	Manufacturer	Serial Number	Cal. Due
<input checked="" type="checkbox"/>	EMI Test S/W	ES10/RE	TOYO Corporation	2022.01.000	-
<input checked="" type="checkbox"/>	EMI TEST RECEIVER	ESU26	Rohde & Schwarz	100552	03, 31, 2023
<input checked="" type="checkbox"/>	HORN ANTENNA	BBHA 9120D	SCHWARZBECK	9120D-1802	12, 16, 2022
<input checked="" type="checkbox"/>	PREAMPLIFIER	8449B	HP	3008A00538	06, 02, 2023

Diagram of test setup





KES Co., Ltd.

3701, 40, Simin-daero 365beon-gil,
Dongan-gu, Anyang-si, Gyeonggi-do, 14057, Korea
Tel: +82-31-425-6200 / Fax: +82-31-424-0450
www.kes.co.kr

Report No.:

KES-EM-22T0620-R1

Page (19) of (45)

Test Conditions

Temperature: (24,2 \pm 0,2) °C

Relative Humidity: (44,5 \pm 0,1) % R.H.

Frequency Range of Measurement

1 GHz to 5 GHz

Instrument Settings

IF Band Width: 1 MHz

Test Results

The requirements are:

☒ PASS

☐ NOT PASS

☐ NOT APPLICABLE

Remarks

See Appendix A for test data.

This report shall not be reproduced except in full, without the written approval of KES Co., Ltd.

The results shown in this test report refer only to the sample(s) tested unless otherwise stated.

The authenticity of the test report, contact kes@kes.co.kr

APPENDIX A – TEST DATA

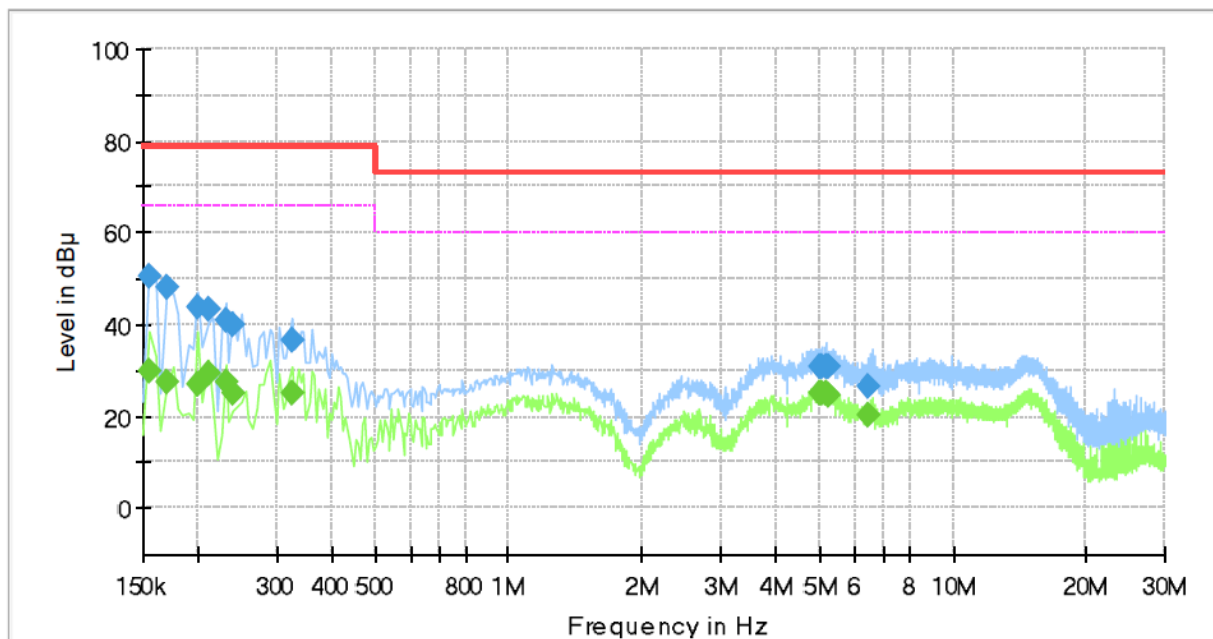
Conducted Emissions at Mains Power Ports

■ DC Mode

HOT LINE

Common Information

Test Description:	Conducted Emission
Model No.:	XNF-9013RV
Phase:	L1
Mode:	DC
Operator Name:	KES





KES Co., Ltd.

3701, 40, Simin-daero 365beon-gil,
Dongan-gu, Anyang-si, Gyeonggi-do, 14057, Korea
Tel: +82-31-425-6200 / Fax: +82-31-424-0450
www.kes.co.kr

Report No.:

KES-EM-22T0620-R1

Page (21) of (45)

Final Result

Frequency (MHz)	QuasiPeak (dBμV)	CAverage (dBμV)	Limit (dBμV)	Margin (dB)	Meas. Time (ms)	Bandwidth (kHz)	Line	Corr. (dB)
0.155000	50.33	---	79.00	28.67	1000.0	9.000	L1	19.4
0.155000	---	30.05	66.00	35.95	1000.0	9.000	L1	19.4
0.170000	47.92	---	79.00	31.08	1000.0	9.000	L1	19.4
0.170000	---	27.27	66.00	38.73	1000.0	9.000	L1	19.4
0.200000	---	27.19	66.00	38.81	1000.0	9.000	L1	19.4
0.200000	43.92	---	79.00	35.08	1000.0	9.000	L1	19.4
0.210000	43.22	---	79.00	35.78	1000.0	9.000	L1	19.4
0.210000	---	29.58	66.00	36.42	1000.0	9.000	L1	19.4
0.230000	---	27.33	66.00	38.67	1000.0	9.000	L1	19.5
0.230000	41.10	---	79.00	37.90	1000.0	9.000	L1	19.5
0.240000	39.80	---	79.00	39.20	1000.0	9.000	L1	19.5
0.240000	---	24.98	66.00	41.02	1000.0	9.000	L1	19.5
0.325000	---	25.04	66.00	40.96	1000.0	9.000	L1	19.5
0.325000	36.56	---	79.00	42.44	1000.0	9.000	L1	19.5
5.025000	30.85	---	73.00	42.15	1000.0	9.000	L1	19.6
5.025000	---	25.03	60.00	34.97	1000.0	9.000	L1	19.6
5.065000	31.03	---	73.00	41.97	1000.0	9.000	L1	19.6
5.065000	---	25.15	60.00	34.85	1000.0	9.000	L1	19.6
5.170000	---	24.89	60.00	35.11	1000.0	9.000	L1	19.6
5.170000	30.87	---	73.00	42.13	1000.0	9.000	L1	19.6
5.240000	---	24.79	60.00	35.21	1000.0	9.000	L1	19.6
5.240000	30.65	---	73.00	42.35	1000.0	9.000	L1	19.6
6.445000	---	20.29	60.00	39.71	1000.0	9.000	L1	19.5
6.445000	26.59	---	73.00	46.41	1000.0	9.000	L1	19.5

This report shall not be reproduced except in full, without the written approval of KES Co., Ltd.

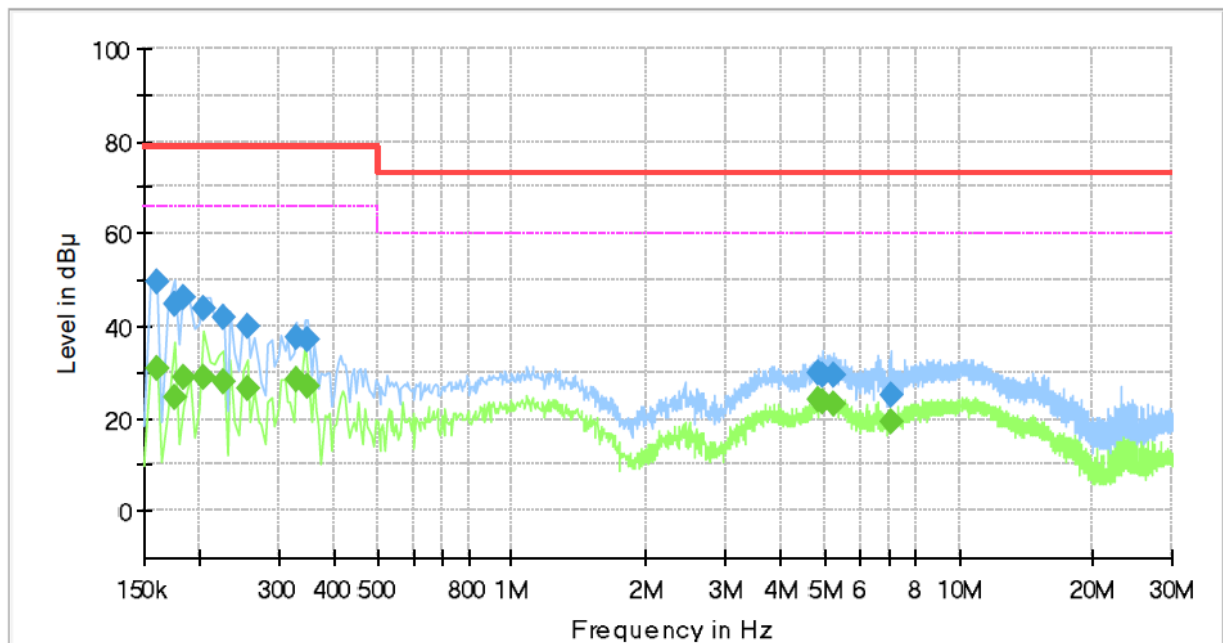
The results shown in this test report refer only to the sample(s) tested unless otherwise stated.

The authenticity of the test report, contact kes@kes.co.kr

NEUTRAL LINE

Common Information

Test Description:	Conducted Emission
Model No.:	XNF-9013RV
Phase:	N
Mode:	DC
Operator Name:	KES



This report shall not be reproduced except in full, without the written approval of KES Co., Ltd.
The results shown in this test report refer only to the sample(s) tested unless otherwise stated.
The authenticity of the test report, contact kes@kes.co.kr



KES Co., Ltd.

3701, 40, Simin-daero 365beon-gil,
Dongan-gu, Anyang-si, Gyeonggi-do, 14057, Korea
Tel: +82-31-425-6200 / Fax: +82-31-424-0450
www.kes.co.kr

Report No.:

KES-EM-22T0620-R1

Page (23) of (45)

Final Result

Frequency (MHz)	QuasiPeak (dBμV)	CAverage (dBμV)	Limit (dBμV)	Margin (dB)	Meas. Time (ms)	Bandwidth (kHz)	Line	Corr. (dB)
0.160000	---	31.03	66.00	34.97	1000.0	9.000	N	19.4
0.160000	49.80	---	79.00	29.20	1000.0	9.000	N	19.4
0.175000	44.66	---	79.00	34.34	1000.0	9.000	N	19.4
0.175000	---	24.74	66.00	41.26	1000.0	9.000	N	19.4
0.185000	46.20	---	79.00	32.80	1000.0	9.000	N	19.4
0.185000	---	29.07	66.00	36.93	1000.0	9.000	N	19.4
0.205000	43.85	---	79.00	35.15	1000.0	9.000	N	19.4
0.205000	---	28.79	66.00	37.21	1000.0	9.000	N	19.4
0.225000	42.03	---	79.00	36.97	1000.0	9.000	N	19.4
0.225000	---	28.17	66.00	37.83	1000.0	9.000	N	19.4
0.255000	---	26.74	66.00	39.26	1000.0	9.000	N	19.5
0.255000	39.93	---	79.00	39.07	1000.0	9.000	N	19.5
0.330000	---	28.29	66.00	37.71	1000.0	9.000	N	19.5
0.330000	37.62	---	79.00	41.38	1000.0	9.000	N	19.5
0.350000	---	26.89	66.00	39.11	1000.0	9.000	N	19.5
0.350000	36.91	---	79.00	42.09	1000.0	9.000	N	19.5
4.865000	29.95	---	73.00	43.05	1000.0	9.000	N	19.7
4.865000	---	24.20	60.00	35.80	1000.0	9.000	N	19.7
4.980000	---	23.43	60.00	36.57	1000.0	9.000	N	19.6
4.980000	29.30	---	73.00	43.70	1000.0	9.000	N	19.6
5.255000	29.40	---	73.00	43.60	1000.0	9.000	N	19.6
5.255000	---	23.28	60.00	36.72	1000.0	9.000	N	19.6
7.020000	---	19.14	60.00	40.86	1000.0	9.000	N	19.5
7.020000	25.01	---	73.00	47.99	1000.0	9.000	N	19.5

This report shall not be reproduced except in full, without the written approval of KES Co., Ltd.

The results shown in this test report refer only to the sample(s) tested unless otherwise stated.

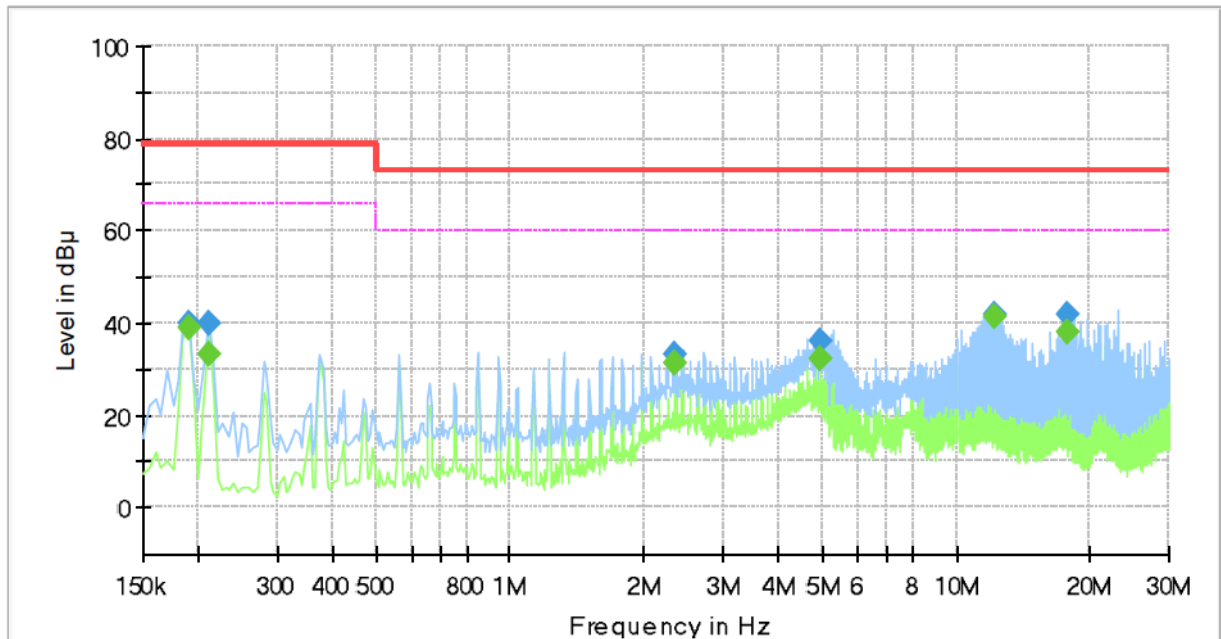
The authenticity of the test report, contact kes@kes.co.kr

■ PoE Mode

HOT LINE

Common Information

Test Description:	Conducted Emission
Model No.:	XNF-9013RV
Phase:	PoE
Mode:	L1
Operator Name:	KES



Final Result

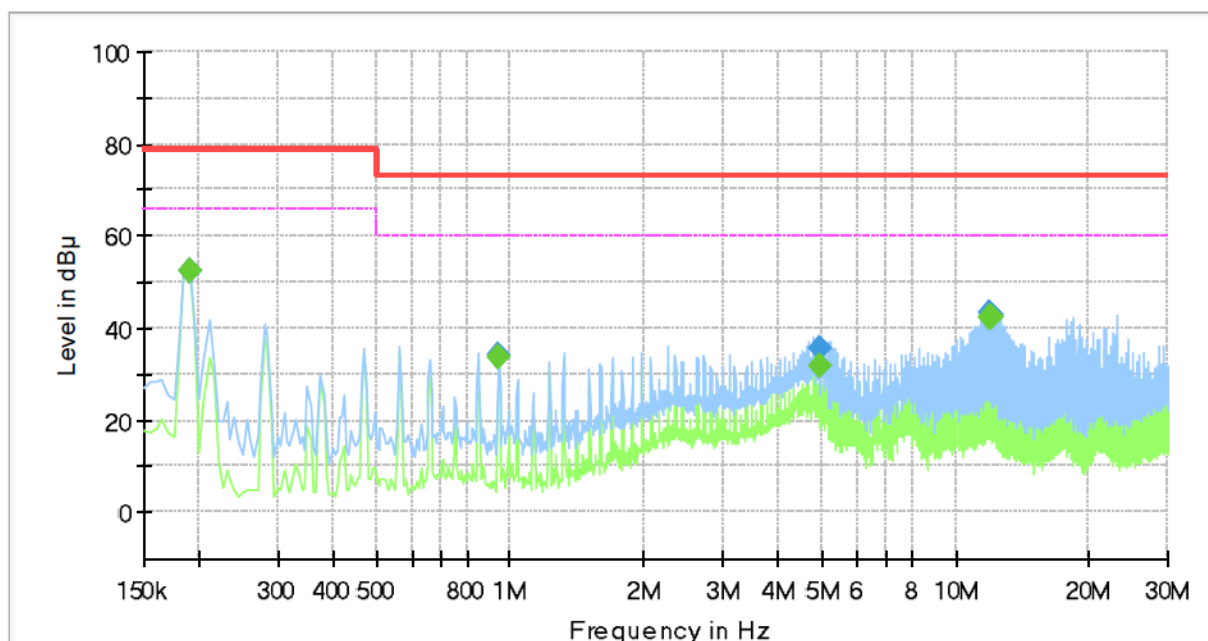
Frequency (MHz)	QuasiPeak (dBμV)	CAverage (dBμV)	Limit (dBμV)	Margin (dB)	Meas. Time (ms)	Bandwidth (kHz)	Line	Corr. (dB)
0.190000	---	38.90	66.00	27.10	1000.0	9.000	L1	19.4
0.190000	40.10	---	79.00	38.90	1000.0	9.000	L1	19.4
0.210000	---	33.47	66.00	32.53	1000.0	9.000	L1	19.4
0.210000	39.74	---	79.00	39.26	1000.0	9.000	L1	19.4
2.350000	---	31.18	60.00	28.82	1000.0	9.000	L1	20.3
2.350000	33.06	---	73.00	39.94	1000.0	9.000	L1	20.3
4.965000	---	32.16	60.00	27.84	1000.0	9.000	L1	19.6
4.965000	36.35	---	73.00	36.65	1000.0	9.000	L1	19.6
12.220000	---	41.34	60.00	18.66	1000.0	9.000	L1	20.0
12.220000	41.94	---	73.00	31.06	1000.0	9.000	L1	20.0
17.695000	---	38.01	60.00	21.99	1000.0	9.000	L1	20.0
17.695000	41.74	---	73.00	31.26	1000.0	9.000	L1	20.0

This report shall not be reproduced except in full, without the written approval of KES Co., Ltd.
 The results shown in this test report refer only to the sample(s) tested unless otherwise stated.
 The authenticity of the test report, contact kes@kes.co.kr

NEUTRAL LINE

Common Information

Test Description:	Conducted Emission
Model No.:	XNF-9013RV
Phase:	PoE
Mode:	N
Operator Name:	KES



Final Result

Frequency (MHz)	QuasiPeak (dBμV)	CAverage (dBμV)	Limit (dBμV)	Margin (dB)	Meas. Time (ms)	Bandwidth (kHz)	Line	Corr. (dB)
0.190000	---	52.48	66.00	13.52	1000.0	9.000	N	19.4
0.190000	52.68	---	79.00	26.32	1000.0	9.000	N	19.4
0.940000	---	33.92	60.00	26.08	1000.0	9.000	N	20.1
0.940000	34.16	---	73.00	38.84	1000.0	9.000	N	20.1
4.965000	---	31.69	60.00	28.31	1000.0	9.000	N	19.6
4.965000	35.58	---	73.00	37.42	1000.0	9.000	N	19.6
11.940000	---	42.40	60.00	17.60	1000.0	9.000	N	20.0
11.940000	43.24	---	73.00	29.76	1000.0	9.000	N	20.0
12.125000	---	42.25	60.00	17.75	1000.0	9.000	N	20.0
12.125000	42.86	---	73.00	30.14	1000.0	9.000	N	20.0

◆ Calculation

QuasiPeak [dBuV] / CAverage [dBuV] = Reading Value [dBuV] + Corr. [dB]

QuasiPeak / CAverage : The Final Value

Reading Value : Not shown in the table.

Corr. : Correction values (LISN FACTOR + (Cable Loss + Pulse Limiter FACTOR))

This report shall not be reproduced except in full, without the written approval of KES Co., Ltd.

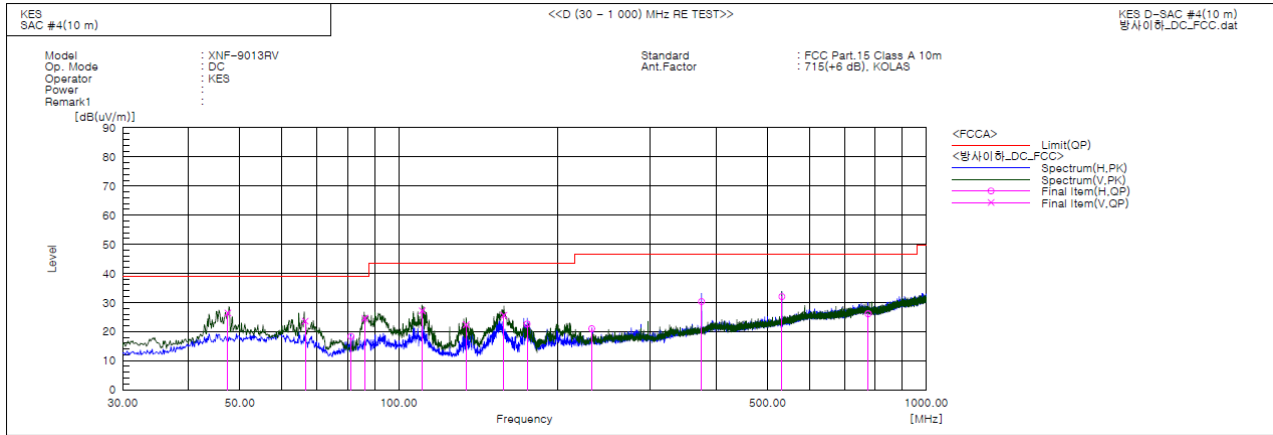
The results shown in this test report refer only to the sample(s) tested unless otherwise stated.

The authenticity of the test report, contact kes@kes.co.kr

Radiated Electric Field Emissions(Below 1 GHz)

- 47 CFR Part 15, Subpart B

■ DC Mode



Final Result

No.	Frequency [MHz]	(P)	Reading QP [dB(uV)]	c.f [dB(1/m)]	Result QP [dB(uV/m)]	Limit QP [dB(uV/m)]	Margin QP [dB]	Height [cm]	Angle [deg]	Remark
1	47.450	V	47.6	-21.2	26.4	39.0	12.6	147.0	219.0	
2	66.541	V	47.3	-23.7	23.6	39.0	15.4	164.0	54.0	
3	81.219	H	45.8	-27.5	18.3	39.0	20.7	378.0	134.0	
4	86.326	V	50.2	-25.6	24.6	39.0	14.4	145.0	230.0	
5	110.860	V	49.6	-22.4	27.2	43.5	16.3	110.0	265.0	
6	134.216	V	47.8	-25.4	22.4	43.5	21.1	133.0	269.0	
7	158.265	V	50.4	-24.8	25.6	43.5	17.9	113.0	111.0	
8	175.216	H	46.5	-23.9	22.6	43.5	20.9	368.0	192.0	
9	232.214	H	40.9	-19.9	21.0	46.5	25.5	390.0	57.0	
10	374.932	H	45.1	-14.8	30.3	46.5	16.2	400.0	111.0	
11	532.217	H	42.8	-10.8	32.0	46.5	14.5	347.0	222.0	
12	775.584	H	32.8	-6.7	26.1	46.5	20.4	359.0	99.0	

This report shall not be reproduced except in full, without the written approval of KES Co., Ltd.

The results shown in this test report refer only to the sample(s) tested unless otherwise stated.

The authenticity of the test report, contact kes@kes.co.kr



KES Co., Ltd.

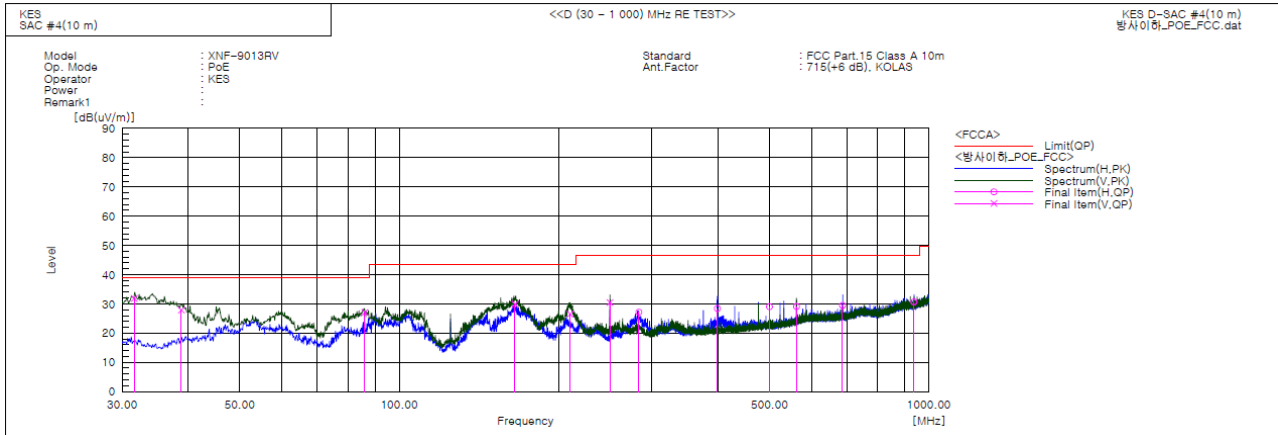
3701, 40, Simin-daero 365beon-gil,
Dongan-gu, Anyang-si, Gyeonggi-do, 14057, Korea
Tel: +82-31-425-6200 / Fax: +82-31-424-0450
www.kes.co.kr

Report No.:

KES-EM-22T0620-R1

Page (27) of (45)

■ PoE Mode



Final Result

No.	Frequency [MHz]	(P)	Reading QP [dB(uV)]	c.f [dB(1/m)]	Result QP [dB(uV/m)]	Limit QP [dB(uV/m)]	Margin QP [dB]	Height [cm]	Angle [deg]	Remark
1	31.614	V	57.0	-25.1	31.9	39.0	7.1	112.0	79.0	
2	38.796	V	51.1	-23.2	27.9	39.0	11.1	147.0	103.0	
3	86.136	V	52.7	-25.6	27.1	39.0	11.9	163.0	269.0	
4	165.388	V	54.3	-24.4	29.9	43.5	13.6	100.0	202.0	
5	210.237	V	47.2	-20.7	26.5	43.5	17.0	125.0	32.0	
6	249.889	V	49.8	-19.3	30.5	46.5	16.0	113.0	359.0	
7	283.432	H	45.8	-18.6	27.2	46.5	19.3	386.0	329.0	
8	398.623	H	42.6	-14.2	28.4	46.5	18.1	375.0	91.0	
9	500.080	H	40.5	-11.5	29.0	46.5	17.5	365.0	325.0	
10	562.416	H	38.9	-9.8	29.1	46.5	17.4	359.0	232.0	
11	687.033	H	37.2	-7.7	29.5	46.5	17.0	400.0	97.0	
12	937.018	H	34.5	-3.8	30.7	46.5	15.8	389.0	58.0	

This report shall not be reproduced except in full, without the written approval of KES Co., Ltd.

The results shown in this test report refer only to the sample(s) tested unless otherwise stated.

The authenticity of the test report, contact kes@kes.co.kr



KES Co., Ltd.

3701, 40, Simin-daero 365beon-gil,
Dongan-gu, Anyang-si, Gyeonggi-do, 14057, Korea
Tel: +82-31-425-6200 / Fax: +82-31-424-0450
www.kes.co.kr

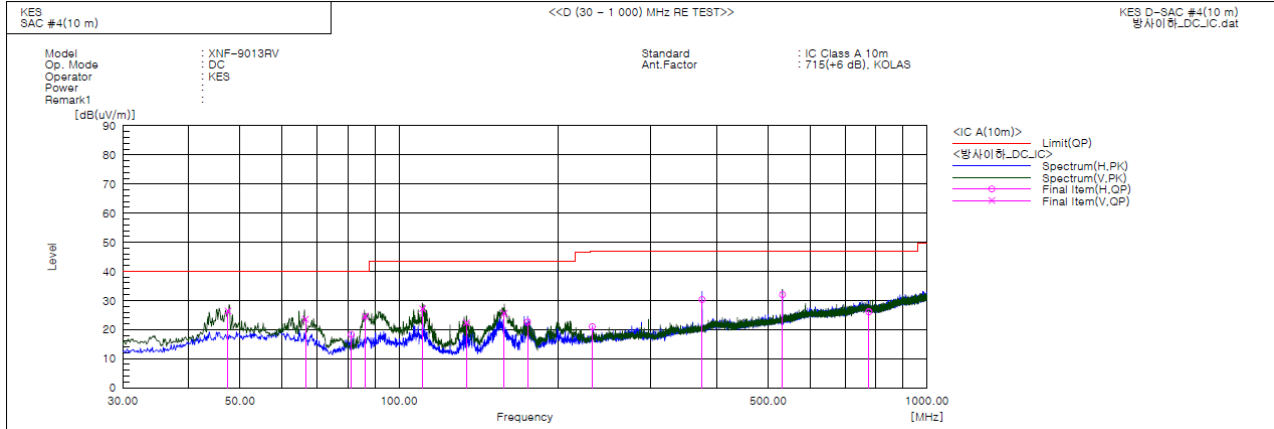
Report No.:

KES-EM-22T0620-R1

Page (28) of (45)

- IC Regulation ICES-003 Issue 7

■ DC Mode



Final Result

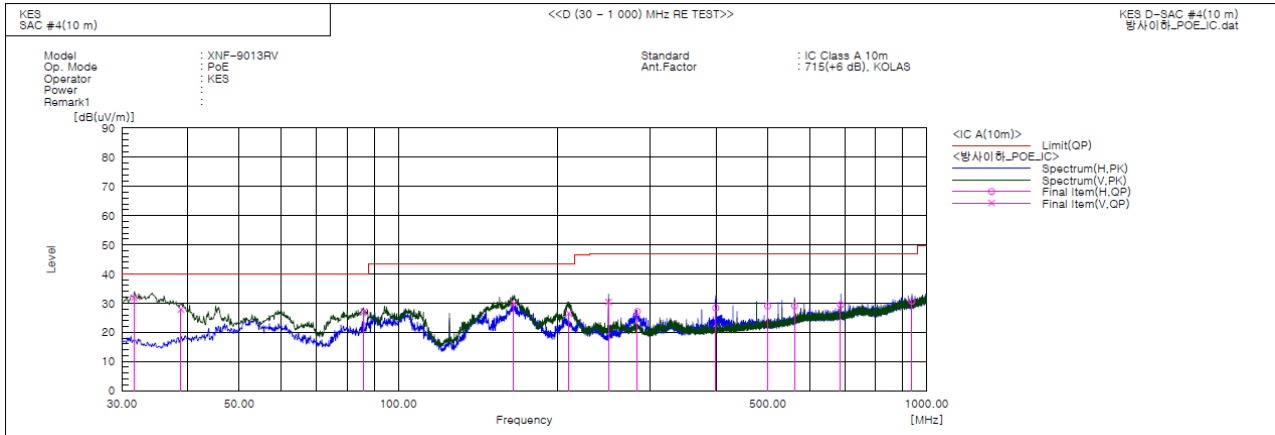
No.	Frequency [MHz]	(P)	Reading QP [dB(uV)]	c.f [dB(1/m)]	Result QP [dB(uV/m)]	Limit QP [dB(uV/m)]	Margin QP [dB]	Height [cm]	Angle [deg]	Remark
1	47.450	V	47.6	-21.2	26.4	40.0	13.6	147.0	219.0	
2	66.541	V	47.3	-23.7	23.6	40.0	16.4	164.0	54.0	
3	81.219	H	45.8	-27.5	18.3	40.0	21.7	378.0	134.0	
4	86.326	V	50.2	-25.6	24.6	40.0	15.4	145.0	230.0	
5	110.860	V	49.6	-22.4	27.2	43.5	16.3	110.0	265.0	
6	134.216	V	47.8	-25.4	22.4	43.5	21.1	133.0	269.0	
7	158.265	V	50.4	-24.8	25.6	43.5	17.9	113.0	111.0	
8	175.216	H	46.5	-23.9	22.6	43.5	20.9	368.0	192.0	
9	232.214	H	40.9	-19.9	21.0	47.0	26.0	390.0	57.0	
10	374.932	H	45.1	-14.8	30.3	47.0	16.7	400.0	111.0	
11	532.217	H	42.8	-10.8	32.0	47.0	15.0	347.0	222.0	
12	775.584	H	32.8	-6.7	26.1	47.0	20.9	359.0	99.0	

This report shall not be reproduced except in full, without the written approval of KES Co., Ltd.

The results shown in this test report refer only to the sample(s) tested unless otherwise stated.

The authenticity of the test report, contact kes@kes.co.kr

PoE Mode



Final Result

No.	Frequency [MHz]	(P)	Reading QP [dB(uV)]	c.f [dB(1/m)]	Result QP [dB(uV/m)]	Limit QP [dB(uV/m)]	Margin QP [dB]	Height [cm]	Angle [deg]	Remark
1	31.614	V	57.0	-25.1	31.9	40.0	8.1	112.0	79.0	
2	38.796	V	51.1	-23.2	27.9	40.0	12.1	147.0	103.0	
3	86.136	V	52.7	-25.6	27.1	40.0	12.9	163.0	269.0	
4	165.388	V	54.3	-24.4	29.9	43.5	13.6	100.0	202.0	
5	210.237	V	47.2	-20.7	26.5	43.5	17.0	125.0	32.0	
6	249.889	V	49.8	-19.3	30.5	47.0	16.5	113.0	359.0	
7	283.432	H	45.8	-18.6	27.2	47.0	19.8	386.0	329.0	
8	398.623	H	42.6	-14.2	28.4	47.0	18.6	375.0	91.0	
9	500.080	H	40.5	-11.5	29.0	47.0	18.0	365.0	325.0	
10	562.416	H	38.9	-9.8	29.1	47.0	17.9	359.0	232.0	
11	687.033	H	37.2	-7.7	29.5	47.0	17.5	400.0	97.0	
12	937.018	H	34.5	-3.8	30.7	47.0	16.3	389.0	58.0	

◆ Calculation – SAC #4(10 m)

Result(QP) [dB(μV/m)] = (Reading(QP)[dB(μV)] + c.f[dB(1/m)])

Margin(QP)[dB] = Limit[dB(μV/m)] - Result(QP) [dB(μV/m)]

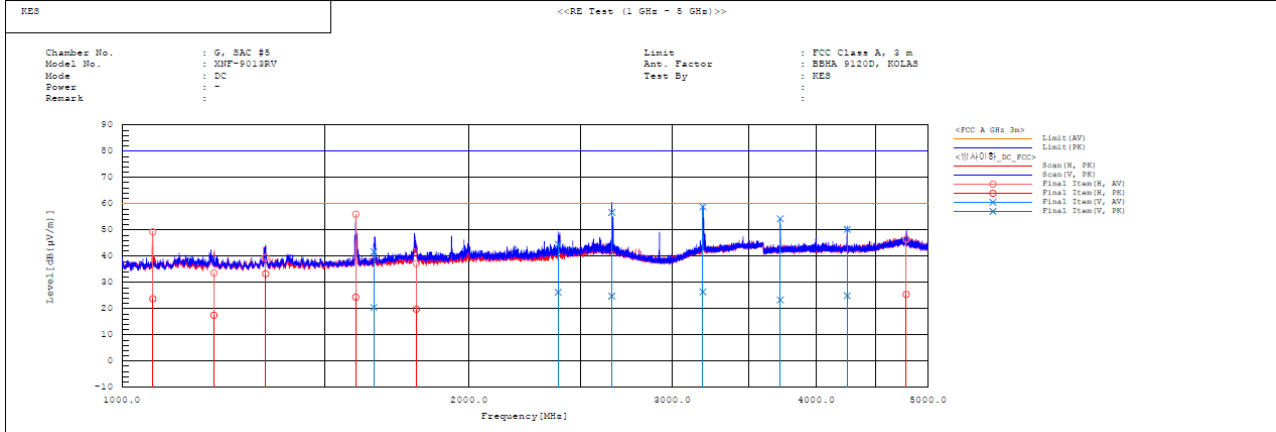
Reading(QP) : Reading value, Result(QP) : Reading value + Factor value

Limit(QP) : Limit value, c.f : (ANT Factor + Cable Loss - Preamp Factor), Margin: Margin value



Radiated Electric Field Emissions(Above 1 GHz)

■ DC Mode

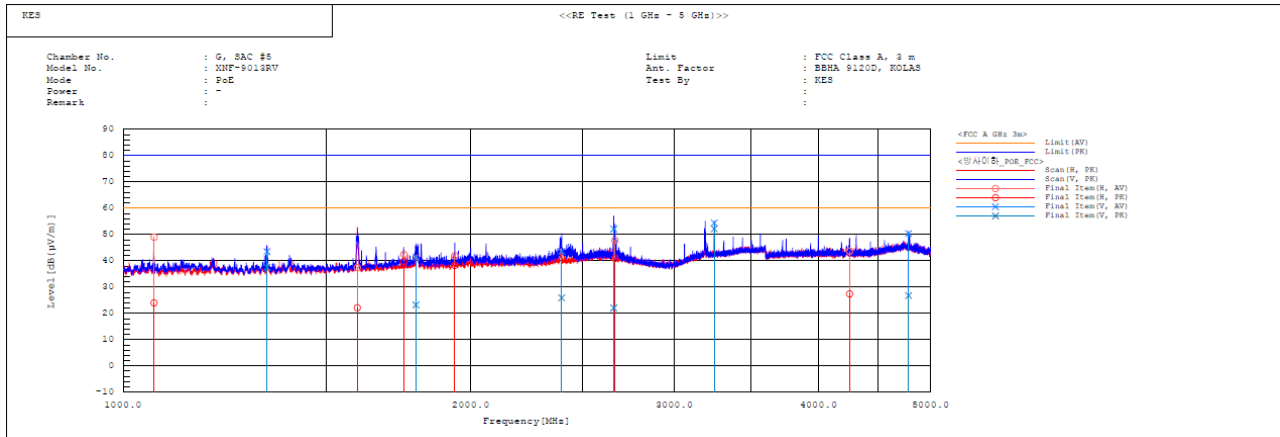


Final Result

No.	Range	Frequency [MHz]	Pol	Reading AV [dB(μV)]	Reading FK [dB(μV)]	c.f [dB(1/m)]	Result AV [dB(μV/m)]	Result FK [dB(μV/m)]	Limit AV [dB(μV/m)]	Limit FK [dB(μV/m)]	Margin AV [dB]	Margin FK [dB]	Height [cm]	Angle [deg]	Remark
1	Range1	1064.015	H	56.7	31.2	-7.4	49.3	23.8	60.0	80.0	10.7	56.2	120.0	1.0	
2	Range1	1202.069	H	40.2	24.1	-6.6	33.6	17.5	60.0	80.0	26.4	62.5	124.0	237.2	
3	Range1	1333.010	H	45.3	39.1	-5.8	39.5	33.3	60.0	80.0	20.5	46.7	374.0	359.3	
4	Range1	1595.604	H	60.7	29.1	-4.7	56.0	24.4	60.0	80.0	4.0	55.6	121.0	286.2	
5	Range1	1654.043	V	46.1	24.9	-4.4	41.7	20.5	60.0	80.0	18.3	59.5	110.0	193.0	
6	Range1	1800.603	H	40.9	23.5	-3.7	37.2	19.8	60.0	80.0	22.8	60.2	105.0	334.8	
7	Range1	2389.400	V	46.0	27.8	-1.5	44.5	26.3	60.0	80.0	15.5	53.7	384.0	203.9	
8	Range1	2660.038	V	57.1	25.2	-0.4	56.7	24.8	60.0	80.0	3.3	55.2	145.0	352.2	
9	Range1	3190.206	V	57.4	25.0	1.4	58.8	26.4	60.0	80.0	1.2	53.6	110.0	357.4	
10	Range1	3723.704	V	51.9	20.9	2.4	54.3	23.3	60.0	80.0	5.7	56.7	134.0	169.6	
11	Range1	4256.317	V	46.0	20.7	4.2	50.2	24.9	60.0	80.0	9.8	55.1	100.0	392.8	
12	Range1	4787.607	H	40.1	19.0	6.4	46.5	25.4	60.0	80.0	13.5	54.6	390.0	206.4	



PoE Mode



Final Result

No.	Range	Frequency [MHz]	Pol	Reading AV [dB(μV)]	Reading PK [dB(μV)]	c.f [dB(1/m)]	Result AV [dB(μV/m)]	Result PK [dB(μV/m)]	Limit AV [dB(μV/m)]	Limit PK [dB(μV/m)]	Margin AV [dB]	Margin PK [dB]	Height [cm]	Angle [deg]	Remark
1	Range1	1064.029	H	56.4	31.4	-7.4	49.0	24.0	60.0	80.0	11.0	56.0	110.0	1.5	
2	Range1	1333.009	V	49.3	43.3	-5.8	43.5	37.5	60.0	80.0	16.5	42.5	105.0	0.0	
3	Range1	1595.509	H	42.1	26.9	-4.7	37.4	22.2	60.0	80.0	22.6	57.8	341.0	164.5	
4	Range1	1750.322	H	46.4	43.6	-3.9	42.5	39.7	60.0	80.0	17.5	40.3	394.0	31.9	
5	Range1	1793.220	V	45.1	26.9	-3.7	41.4	23.2	60.0	80.0	18.6	56.8	120.0	179.4	
6	Range1	1937.562	H	45.0	41.2	-3.0	42.0	39.2	60.0	80.0	18.0	41.8	364.0	54.0	
7	Range1	2397.864	V	45.0	27.3	-1.4	43.6	25.9	60.0	80.0	16.4	54.1	112.0	201.9	
8	Range1	2660.326	V	52.5	22.5	-0.4	52.1	22.1	60.0	80.0	7.9	57.9	165.0	352.2	
9	Range1	2665.997	H	48.1	41.2	-0.3	47.8	40.9	60.0	80.0	12.2	39.1	124.0	44.7	
10	Range1	3250.089	V	52.9	50.7	1.5	54.4	52.2	60.0	80.0	5.6	27.8	133.0	355.6	
11	Range1	4256.250	H	39.5	23.2	4.2	43.7	27.4	60.0	80.0	16.3	52.6	142.0	198.7	
12	Range1	4797.363	V	43.9	20.4	6.4	50.3	26.8	60.0	80.0	9.7	53.2	134.0	212.8	

Calculation

Result(PK/CAV) [dB(μV/m)] = (Reading(PK/CAV)[dB(μV)] + c.f[dB(1/m)]

Margin(PK/CAV)[dB] = Limit[dB(μV/m)] - Result(PK/CAV) [dB(μV/m)]

Reading(PK/CAV) : Reading value, Result(PK/CAV) : Reading value + Factor value

Limit(QP) : Limit value, c.f : (ANT Factor + Cable Loss - Preamp Factor), Margin: Margin value

Test Setup Photos and Configuration

Conducted Emissions at Mains Power Ports

■ DC Mode



This report shall not be reproduced except in full, without the written approval of KES Co., Ltd.
The results shown in this test report refer only to the sample(s) tested unless otherwise stated.
The authenticity of the test report, contact kes@kes.co.kr

■ PoE Mode

This report shall not be reproduced except in full, without the written approval of KES Co., Ltd.
The results shown in this test report refer only to the sample(s) tested unless otherwise stated.
The authenticity of the test report, contact kes@kes.co.kr

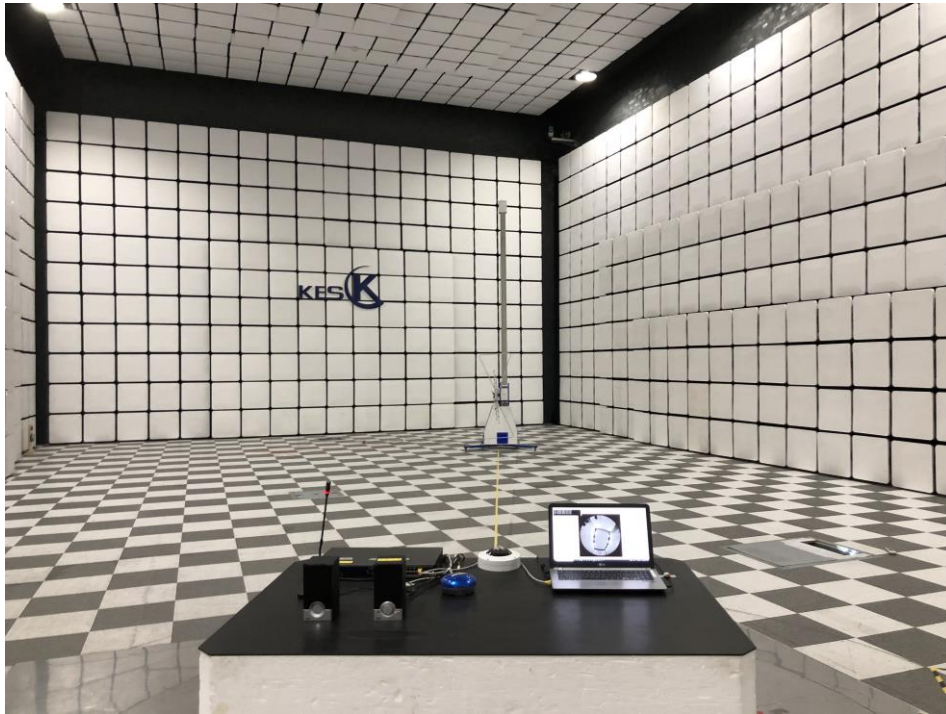
Radiated Electric Field Emissions(Below 1 GHz)

■ DC Mode



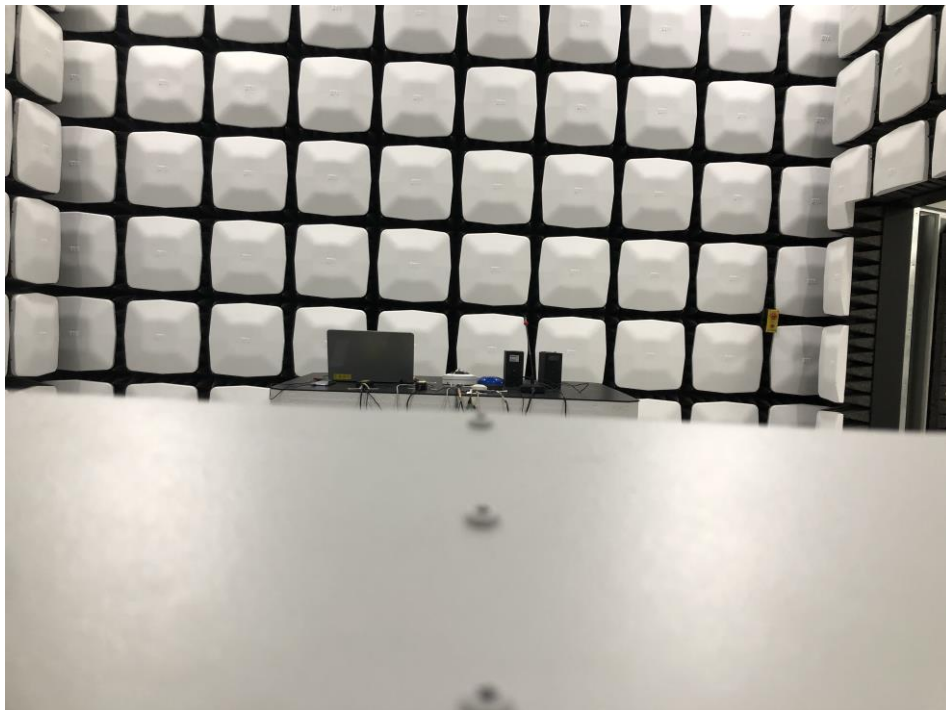
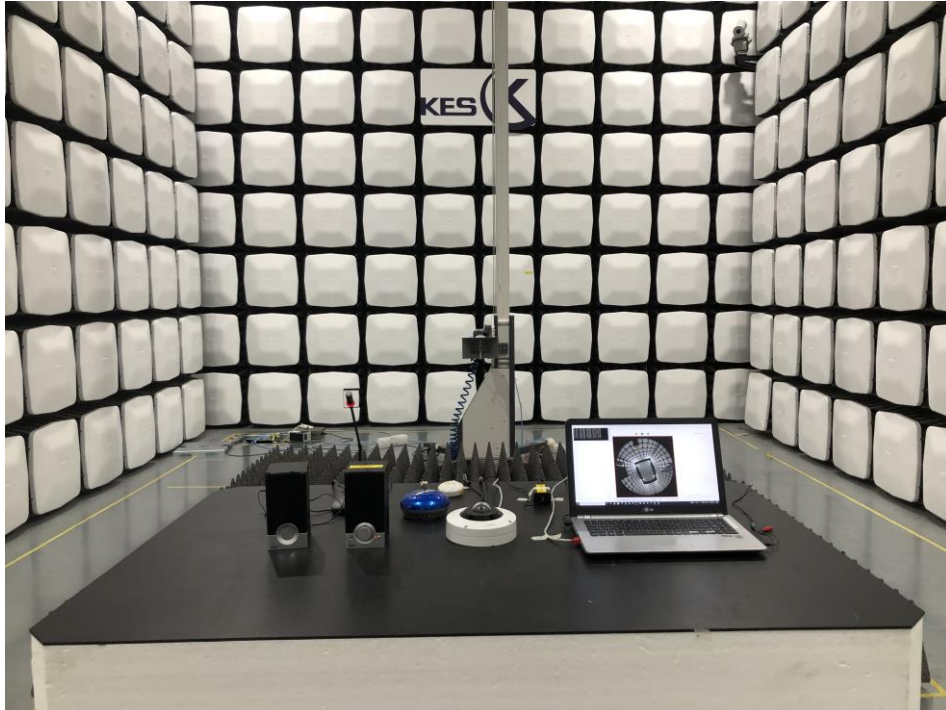
This report shall not be reproduced except in full, without the written approval of KES Co., Ltd.
The results shown in this test report refer only to the sample(s) tested unless otherwise stated.
The authenticity of the test report, contact kes@kes.co.kr

■ PoE Mode



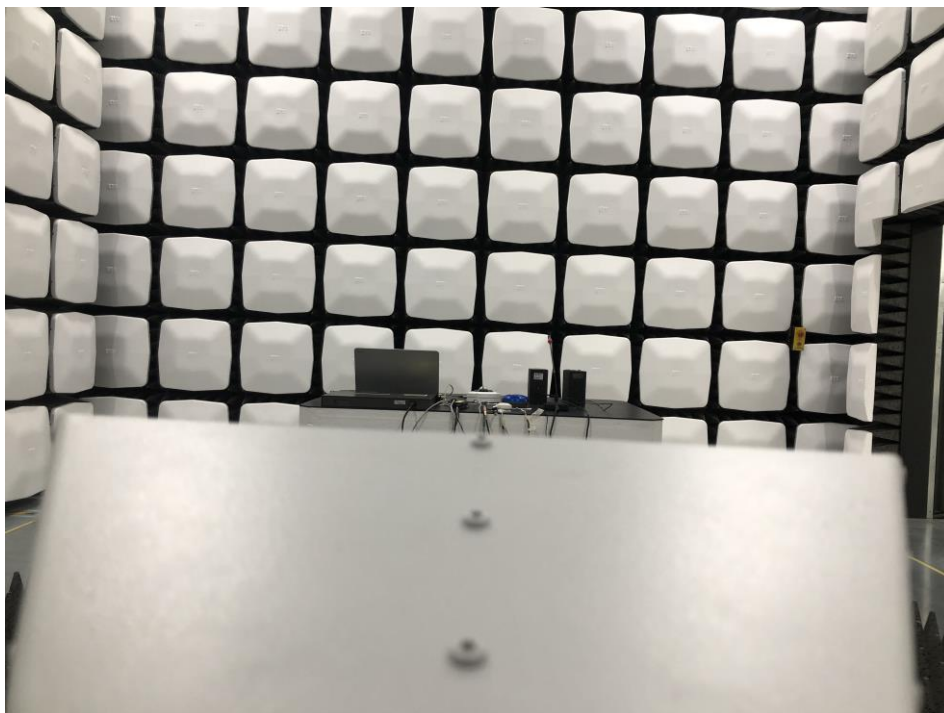
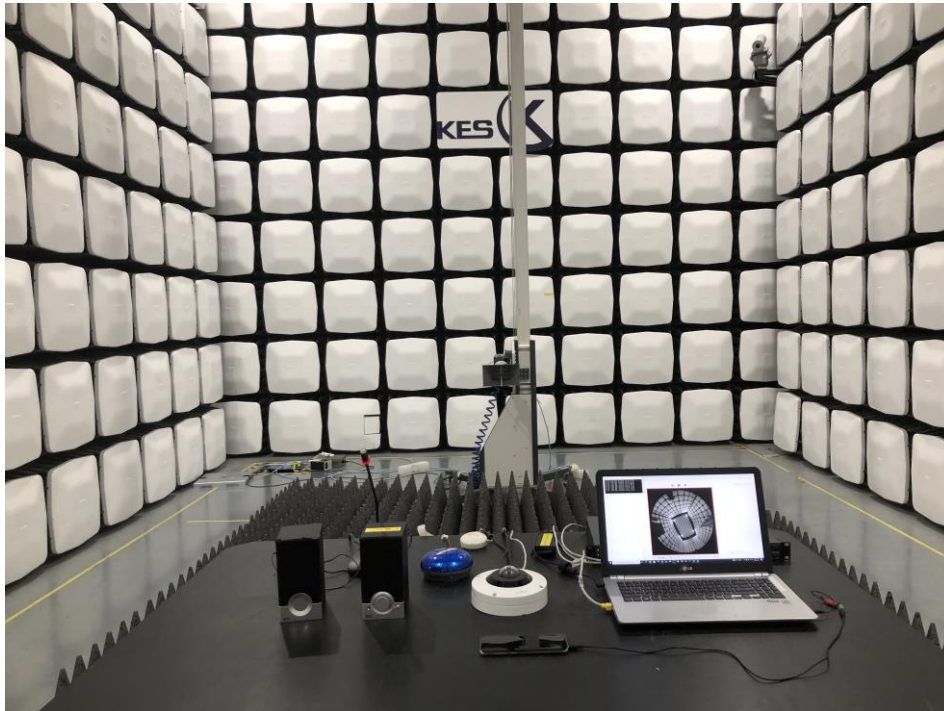
Radiated Electric Field Emissions(Above 1 GHz)

■ DC Mode



This report shall not be reproduced except in full, without the written approval of KES Co., Ltd.
The results shown in this test report refer only to the sample(s) tested unless otherwise stated.
The authenticity of the test report, contact kes@kes.co.kr

■ PoE Mode



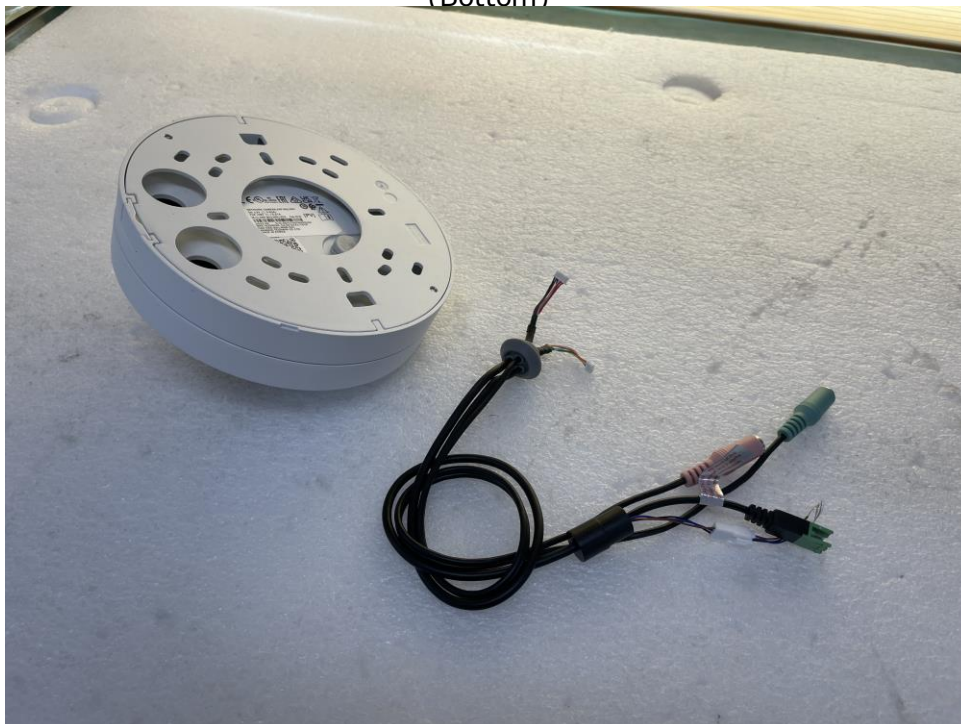
This report shall not be reproduced except in full, without the written approval of KES Co., Ltd.
The results shown in this test report refer only to the sample(s) tested unless otherwise stated.
The authenticity of the test report, contact kes@kes.co.kr

EUT External Photographs

(Top)



(Bottom)



This report shall not be reproduced except in full, without the written approval of KES Co., Ltd.
The results shown in this test report refer only to the sample(s) tested unless otherwise stated.
The authenticity of the test report, contact kes@kes.co.kr

EUT Internal Photographs

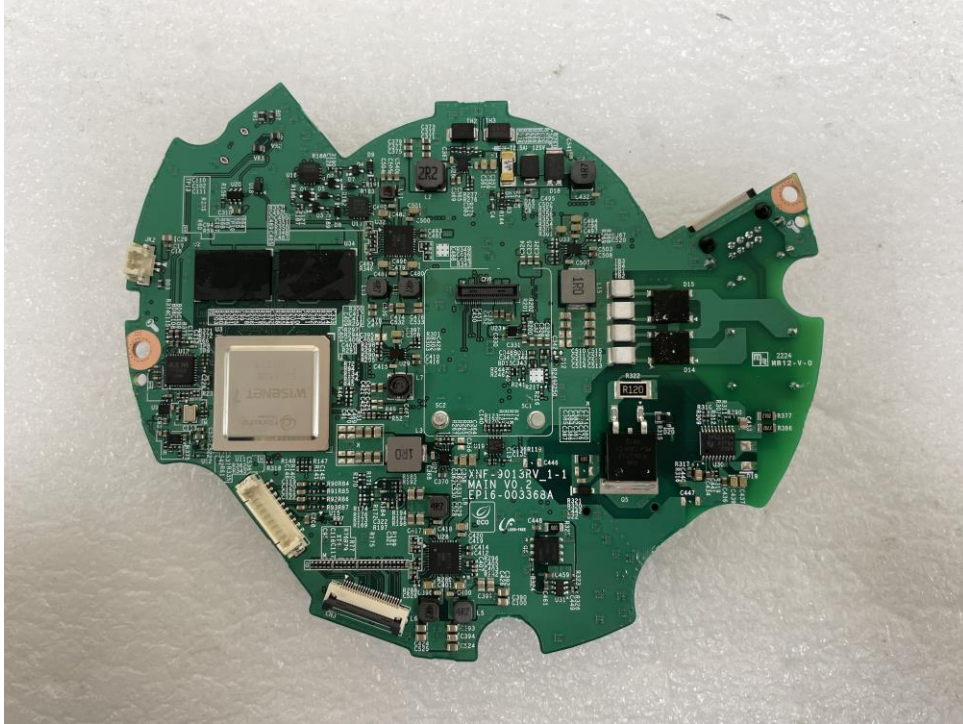
(Internal View)



This report shall not be reproduced except in full, without the written approval of KES Co., Ltd.
The results shown in this test report refer only to the sample(s) tested unless otherwise stated.
The authenticity of the test report, contact kes@kes.co.kr

EUT Internal View – Board 1

(Top)



(Bottom)



This report shall not be reproduced except in full, without the written approval of KES Co., Ltd.
The results shown in this test report refer only to the sample(s) tested unless otherwise stated.
The authenticity of the test report, contact kes@kes.co.kr

EUT Internal View – Board 2

(Top)



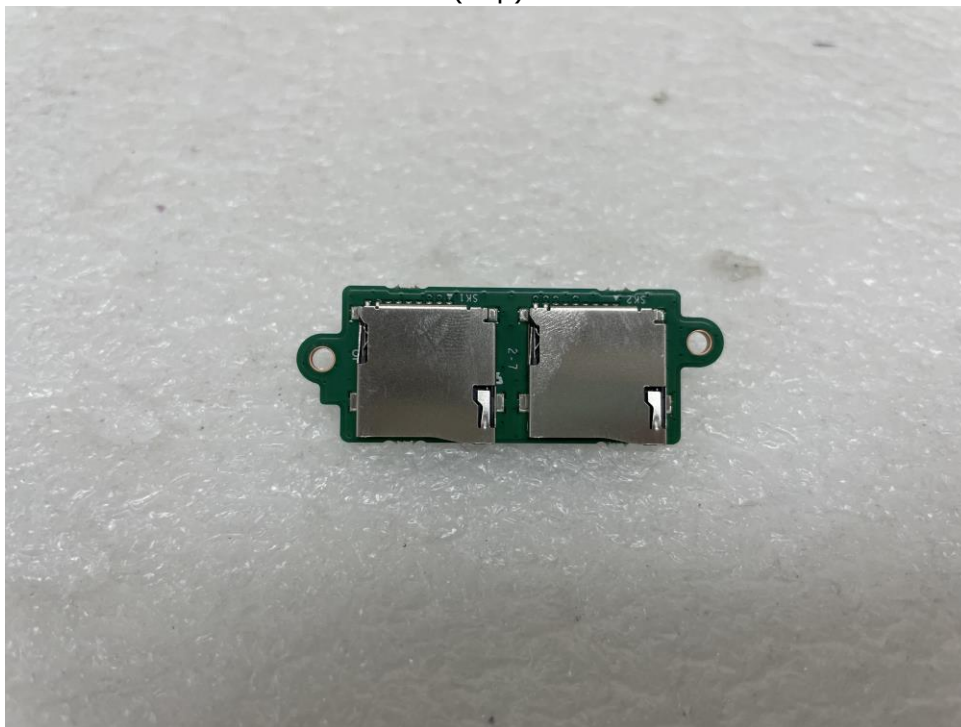
(Bottom)



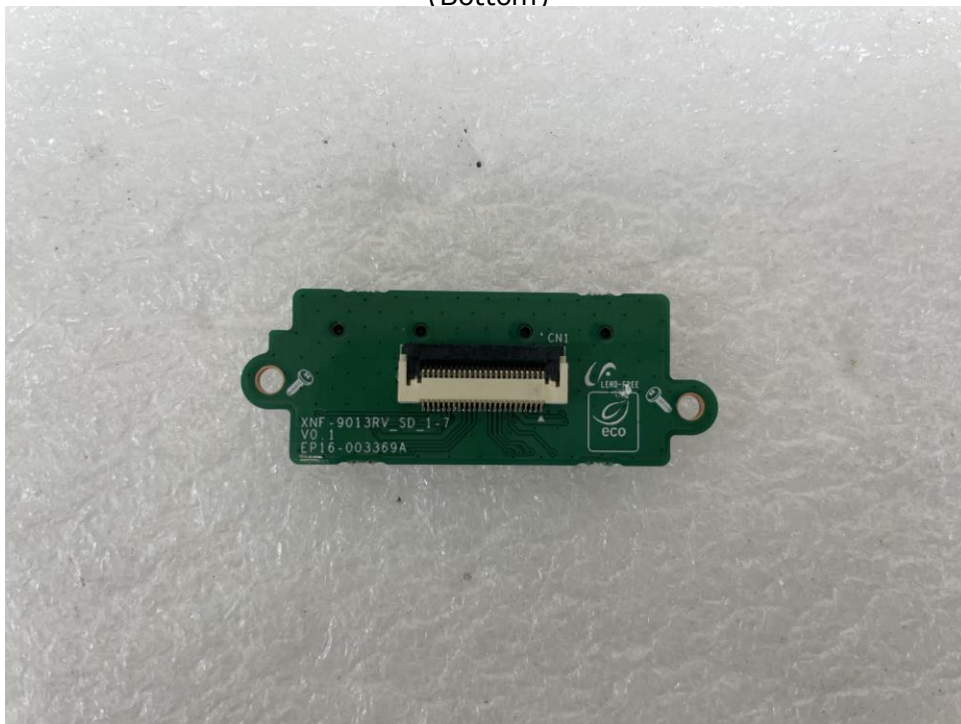
This report shall not be reproduced except in full, without the written approval of KES Co., Ltd.
The results shown in this test report refer only to the sample(s) tested unless otherwise stated.
The authenticity of the test report, contact kes@kes.co.kr

EUT Internal View – Board 3

(Top)



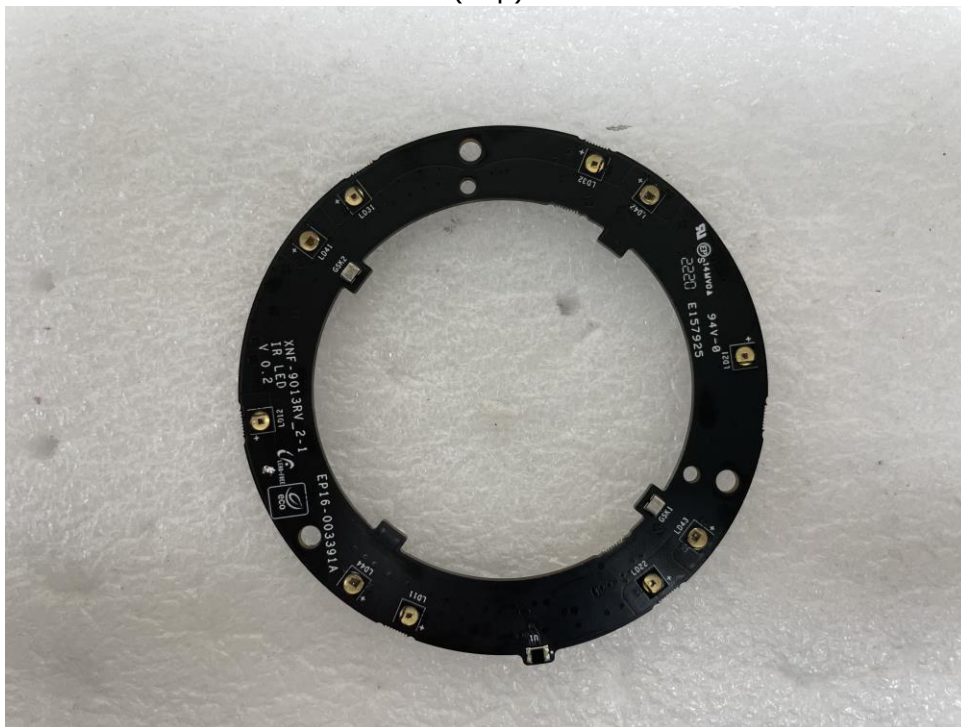
(Bottom)



This report shall not be reproduced except in full, without the written approval of KES Co., Ltd.
The results shown in this test report refer only to the sample(s) tested unless otherwise stated.
The authenticity of the test report, contact kes@kes.co.kr

EUT Internal View – Board 4

(Top)



(Bottom)



This report shall not be reproduced except in full, without the written approval of KES Co., Ltd.
The results shown in this test report refer only to the sample(s) tested unless otherwise stated.
The authenticity of the test report, contact kes@kes.co.kr

EUT Internal View – Lens

(Top)



(Bottom)



Label Photographs

FCC Label



Hanwha Vision Co., Ltd

XNF-9013RV

IC Label

CAN ICES-003(A) / NMB-003(A)

This device complies with Industry Canada license-exempt RSS standard(s). Operation is subject to the following two conditions:
(1) this device may not cause interference, and (2) this device must accept any interference, including interference that may cause undesired operation of the device.

Le présent appareil est conforme aux CNR d'Industrie Canada applicables aux appareils radio exempts de licence. L'exploitation est autorisée aux deux conditions suivantes :

(1) l'appareil ne doit pas produire de brouillage, et (2) l'utilisateur de l'appareil doit accepter tout brouillage radioélectrique subi, même si le brouillage est susceptible d'en compromettre le fonctionnement.